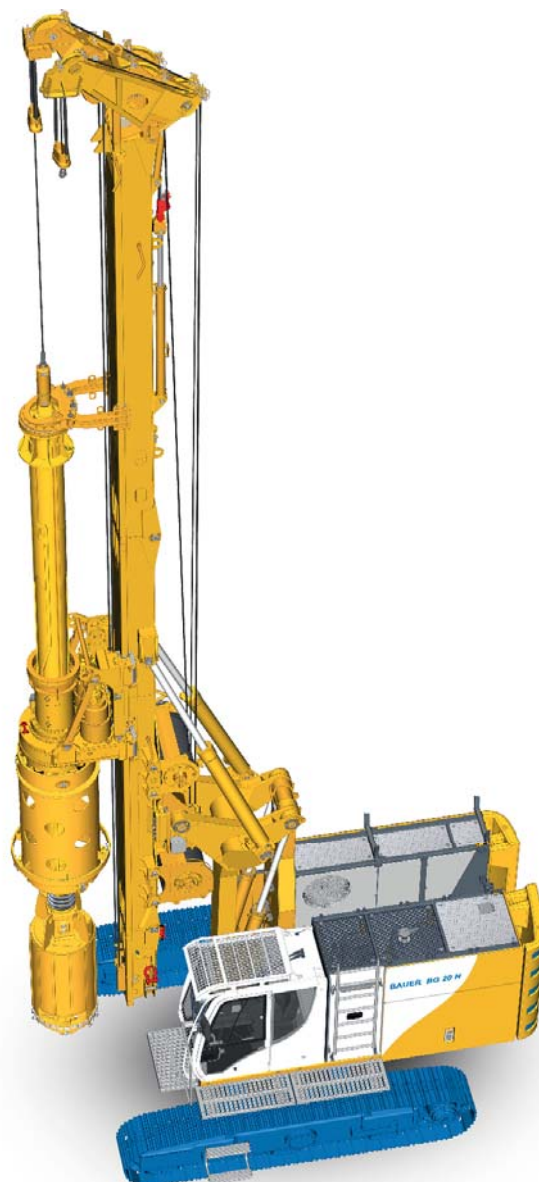


# BAUER BG 20 H

## Rotary Drilling Rig

Base Carrier BT 50



## The BG ValueLine

*Perfection is achieved  
when there is nothing left to take away.*

Drilling uncased deep boreholes stabilized by drilling fluid, or drilling cased boreholes with installing casings by the rotary drive or by a hydraulic casing oscillator. If Kelly drilling is your task, then the BG ValueLine is our solution. The machines of the ValueLine are specifically adapted to no other purpose than Kelly drilling – and that perfectly.

You can expect superior Bauer performance and customary Bauer durability at affordable costs for acquisition and operation. How we do it? By applying cutting-edge technology, reduced to nothing less than the essentials.



- The whole system is optimized for economic Kelly drilling
- Increased efficiency leads to higher productivity and lower fuel consumption at the same time
- The integrated service platform for easy and safe maintenance is a key factor with regard to safety and service
- With the streamline concept, our modern and ergonomic operator cab is tailored to the rig operators
- Our assistance systems support the efficient and comfortable work - every day
- The easy, safe and fast assembling process enables lower unproductive times of the machine

## The Rotary Drilling Rig BG 20 H BT 50

### Maximum rig configuration

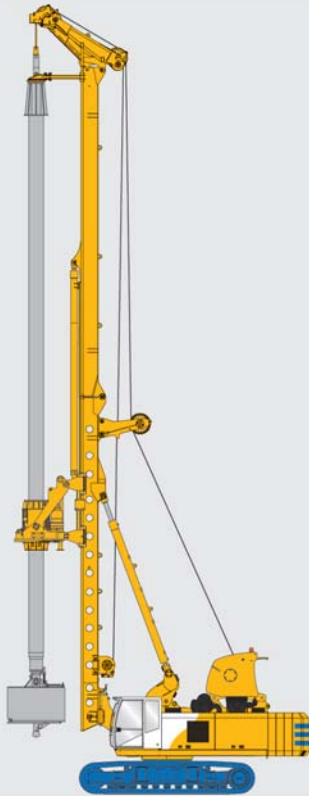
Drilling diameter: 1,500 mm | **59.05 in**

Drilling depth: 40.0 m | **131.23 ft**

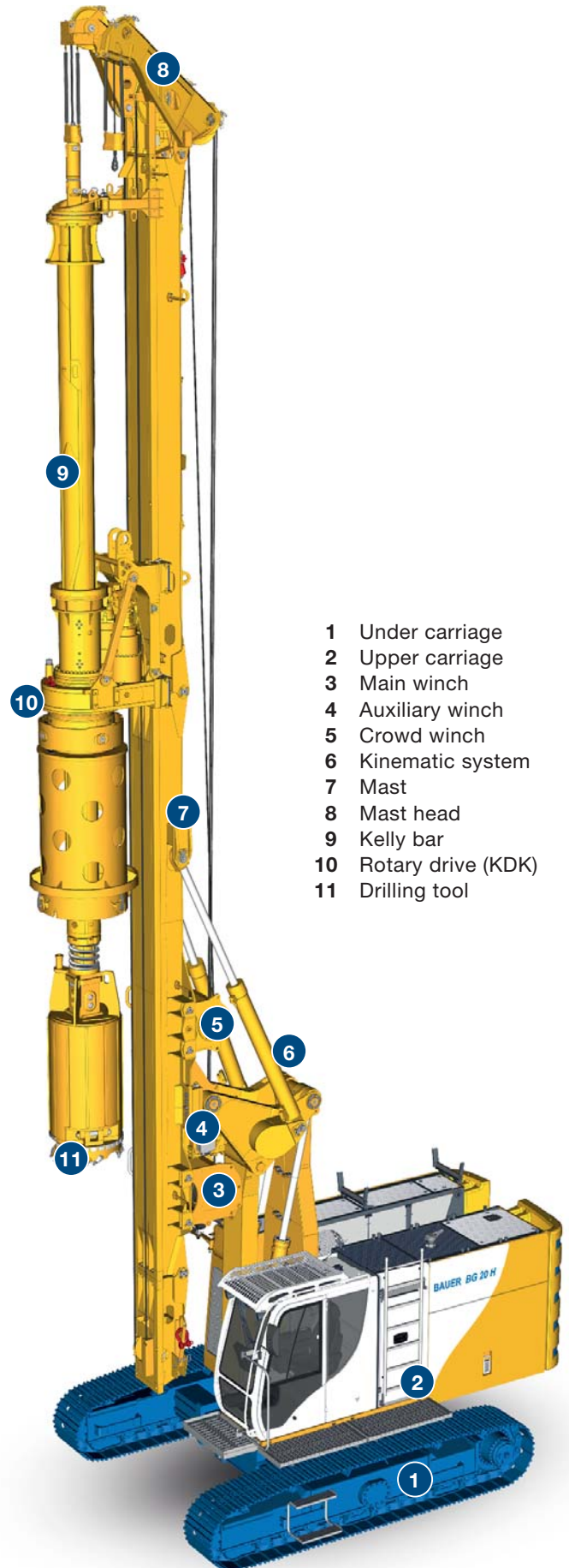
Torque: 200 kNm | **147,510 lbf ft**

Engine: CAT C7.1: 186 kW @ 1,800 rpm  
**250 HP / @ 1,800 rpm**

Height: 18.0 m | **59.1 ft**



BG 38  
BS 80



- 1 Under carriage
- 2 Upper carriage
- 3 Main winch
- 4 Auxiliary winch
- 5 Crowd winch
- 6 Kinematic system
- 7 Mast
- 8 Mast head
- 9 Kelly bar
- 10 Rotary drive (KDK)
- 11 Drilling tool



#### Efficiency

- CAT-engine
- 4 m | **13.1 ft** casing string
- High-performance hydraulic system
- Single-layer winch operation



#### Mobility

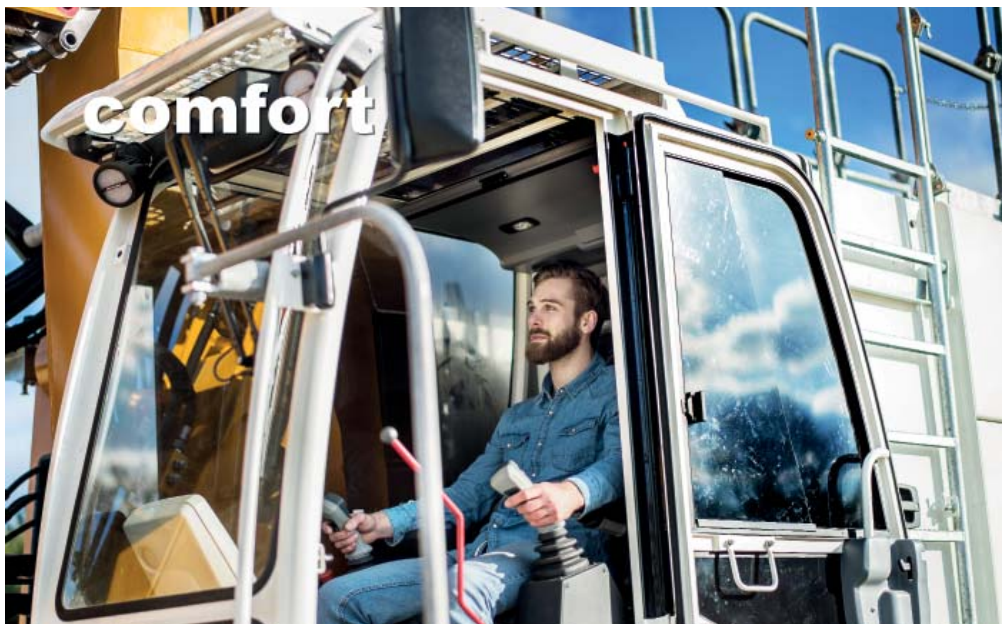
- Transportation width 2.5 m | **8.2 ft**
- Transportation height 3.3 m | **10.8 ft**
- Transportation length 17.2 m | **56.43 ft**
- Transportation weight 51 t | **112,435 lb**, incl. Kelly bar
- Fast mobilisation
- Remote control basic





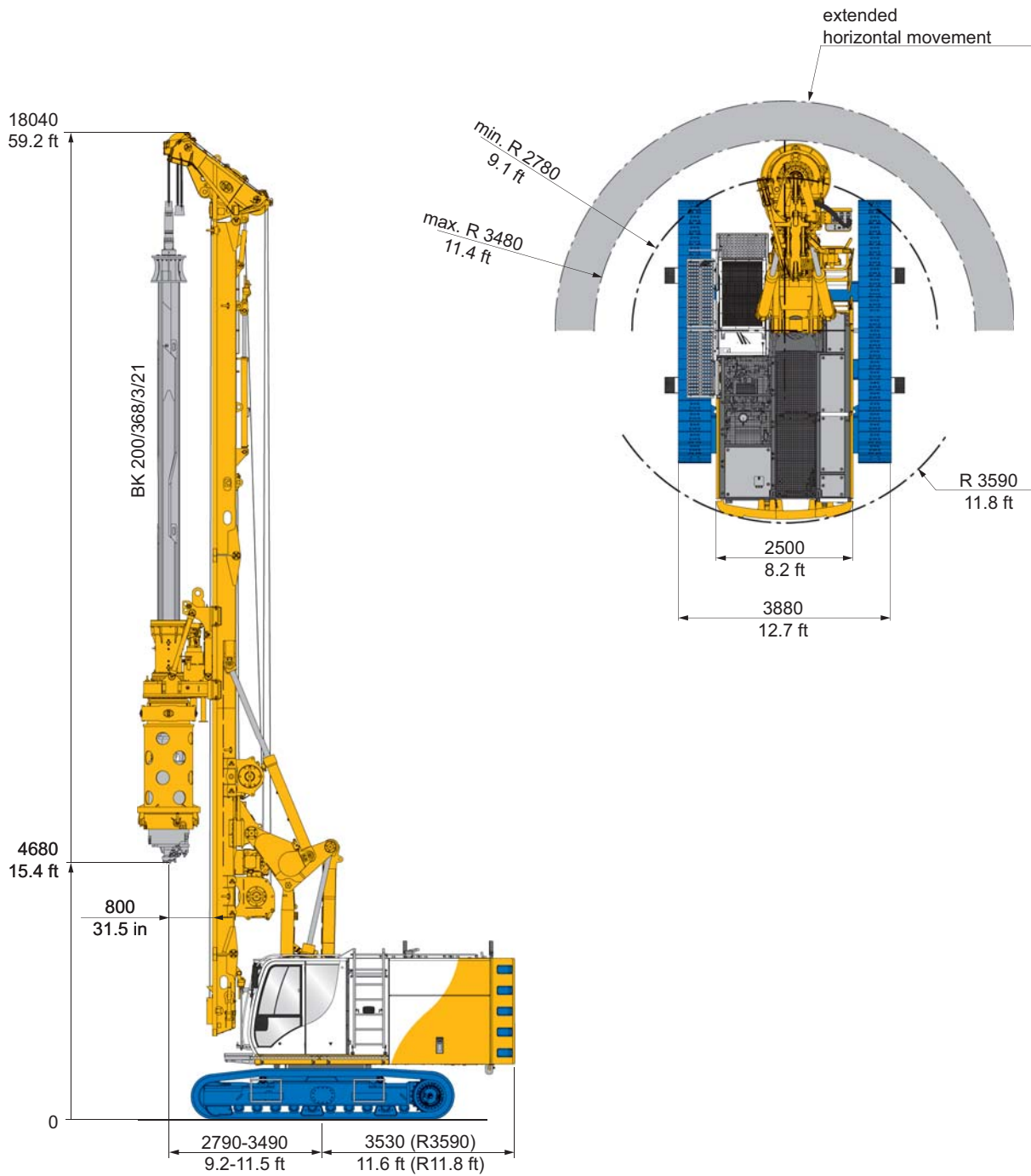
#### **Flexibility**

- Drilling power data
- CFA option



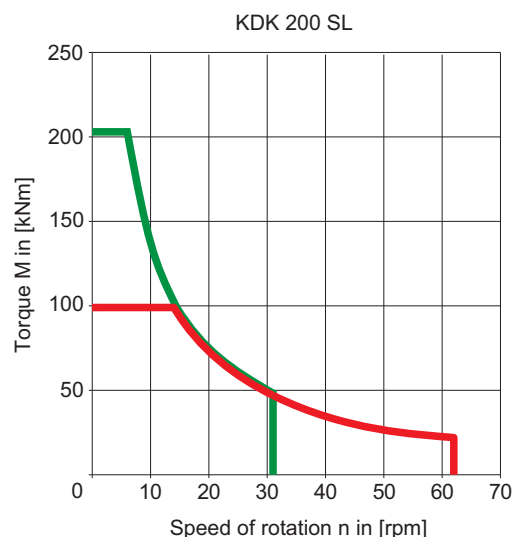
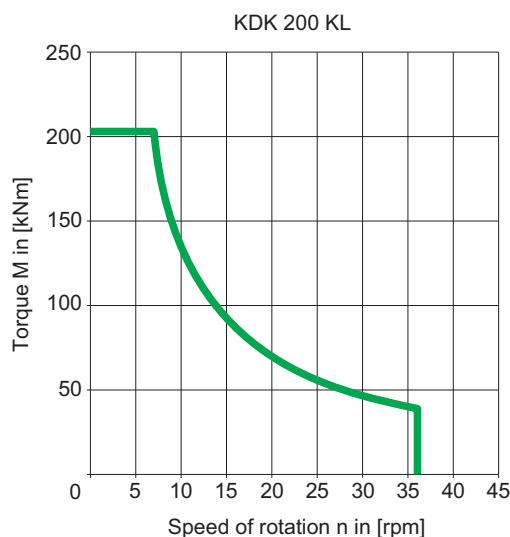
#### **Comfort**

- Comfortable cabin
- Air-suspended driver's seat
- Simplified operating concept
- B-Control screen
- Integrated service platform
- No working @ height
- Easy access to service points



Operating weight approx. 53.0 t | **116,845 lb**  
(as shown)

| Rotary drive                | KDK 200 KL                      | KDK 200 SL                      |
|-----------------------------|---------------------------------|---------------------------------|
| Torque (nominal) at 330 bar | 200 kNm   <i>147,510 lbf ft</i> | 200 kNm   <i>147,510 lbf ft</i> |
| Speed of rotation (max.)    | 35 rpm                          | 60 rpm                          |



| Crowd   | Winch                                     |                                     |
|---|---|-------------------------------------|
| Crowd force push / pull (effective)                         | 110 / 260 kN   <i>24,730 / 58,450 lbf</i> |                                     |
| Crowd force push / pull *                                   | 150 / 210 kN   <i>33,720 / 47,210 lbf</i> |                                     |
| Speed (down / up)   | 9 / 5 m/min   <i>30 / 16 ft/min</i>       |                                     |
| Fast speed (down / up)                                      | 27 / 23 m/min   <i>89 / 75 ft/min</i>     |                                     |
| Main winch  | M6 / L3 / T5                              |                                     |
| Line pull (1st layer) effective / nominal                   | 136 / 175 kN   <i>30,575 / 39,340 lbf</i> |                                     |
| Rope diameter   | 22 mm   <i>0.87 in</i>                    |                                     |
| Line speed (max.)   | 80 m/min   <i>260 ft/min</i>              |                                     |
| Auxiliary winch   | M6 / L3 / T5                              |                                     |
| Line pull (1st layer) effective / nominal                   | 43 / 54 kN   <i>9,670 / 12,140 lbf</i>    |                                     |
| Rope diameter   | 16 mm   <i>0.63 in</i>                    |                                     |
| Line speed (max.)   | 28 m/min   <i>92 ft/min</i>               |                                     |
| Base carrier  | BT 50                                     |                                     |
| Engine  | CAT C 7.1                                 | CAT C 7.1                           |
| Rated output ISO 3046-1                                     | 186 kW   <i>250 HP</i>                    | 186 kW   <i>250 HP</i>              |
|   | 1,800 rpm                                 | 1,800 rpm                           |
| Engine conforms to EEC 97/68 EC<br>EPA/CARB<br>GB20891-2014 | Stage III A<br>Tier 3<br>Stage 3          | Stage V<br>Tier 4 final             |
| Diesel tank capacity/AdBlue                                 | 540 l / - l   <i>145 Gal.</i>             | 540 l / 32 l   <i>145 / 8.5 Gal</i> |
| Ambient air temperature (at full power) up to               | 45° C   <i>113 ° F</i>                    |                                     |
| Sound pressure level in cabin (EN 16228, Annex B)           | L <sub>PA</sub> 80 dB (A)                 |                                     |
| Sound pressure level (2000/14/EG and EN 16228, Annex B)     | L <sub>WA</sub> 105 dB (A)                |                                     |
| Hydraulic power output (measured at inlet to rotary drive)  | 150 kW   <i>200 HP</i>                    |                                     |
| Hydraulic pressure  | 350 bar   <i>35 MPa</i>                   |                                     |
| Undercarriage   | UW 50                                     |                                     |
| Crawler type  | B 60                                      |                                     |
| Traction force effective / nominal                          | 340 / 400 kN   <i>76,435 / 89,925 lbf</i> |                                     |

\* measured at the casing drive adapter



## Base Carrier

## Standard

- Removable counterweight 5.0 t | **11,023 lb**
- Engine diagnostic system
- Gratings on side and in front of operator's cab
- Camera system for rear area surveillance
- Multi-grade hydraulic oil
- Bauer comfort operator's cab with streamline concept, **Fig. A**
  - On-board lighting system LED
  - Air-conditioning system
  - Radio with CD, MP3, USB and Bluetooth c/w hands-free kit
  - Air-cushioned operator's seat with seat heating
  - Protective roof guard
- Integrated service platform, **Fig. B**

## Optional

- Comfort handling kit
  - Camera system for winch surveillance
  - Central lubrication system
  - Electric refueling pump
  - Swivel for auxiliary rope
  - Test ports in upper carriage
  - Tool tray in front of operator's cabin
  - Service tool kit
- Air compressor 1,000 l/min | **220 gal/min**
- Park heating with timer



## BG Attachment

## Standard

- H-type kinematic system, **Fig. C**
- Mast head foldable for transportation
- Crowd cylinder
- Main winch with hydraulic freewheeling control, **Fig. D**
- Swivel for main rope

## Optional

- CFA kit
- Mast support





## KDK Rotary Drive

### Standard

- Rotary drive 200 KL (single gear drive)
- Selectable modes of operation
- Kelly drive adapter for outer casings 368 mm | 14.5 in
- Exchangeable Kelly drive keys
- Quick release couplers on hydraulic hoses

### Optional

- Rotary Drive KDK 200 SL (multi gear drive)
- Cardanic joint

## Measuring and Control Equipment

### Serial Equipment, Fig. E and F

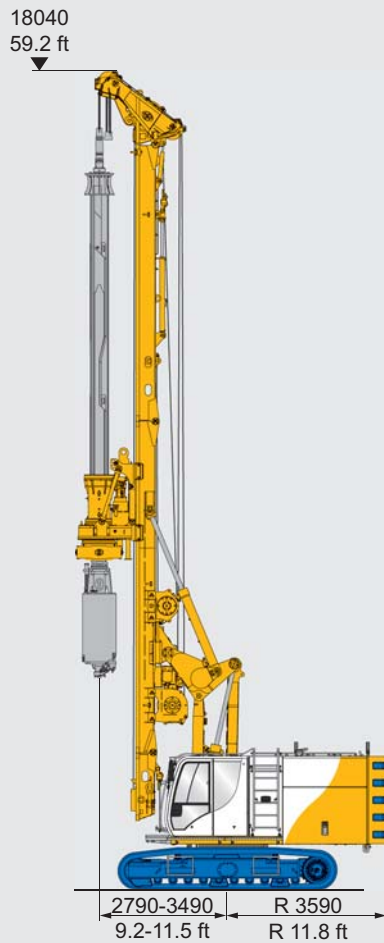
- B-Control monitor with integrated diagnostic function
- Display of fault messages as plain text
- Digital display of loads and torque
- Mast inclination measurement on x/y axes (digital / analogous display)
- Automatic vertical alignment of mast
- Electric load sensing on main and auxiliary rope
- Speed sensing device on KDK
- Electronic limitation of horizontal displacement
- Defined torque setting for KDK
- Crowd stroke measurement
- Kelly drilling assistant
- Automatic crowd control
- One-directional spoil discharge assistant
- Bi-directional spoil discharge assistant
- Casing extraction assistant
- Slewing angle display for upper carriage

### Additional Equipment

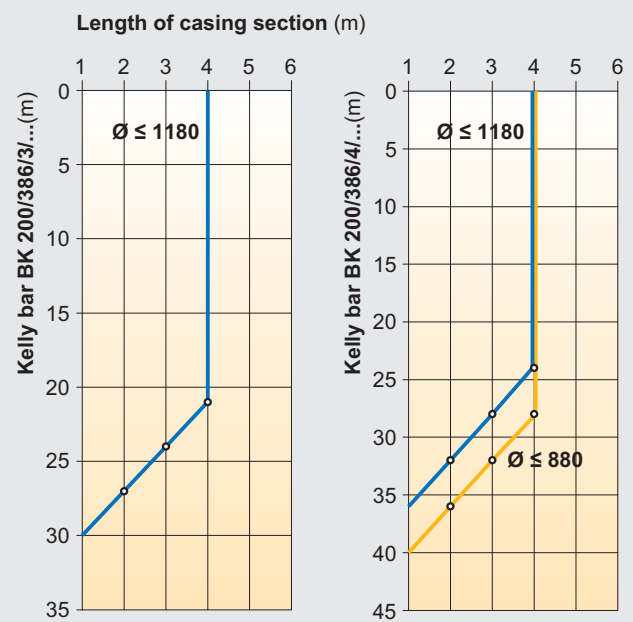
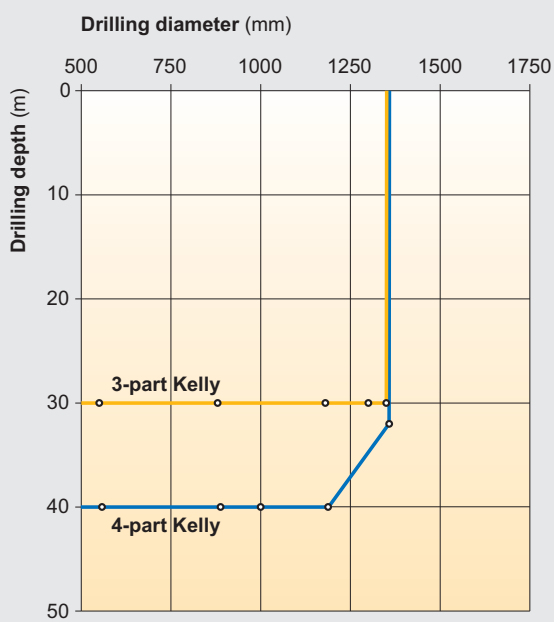
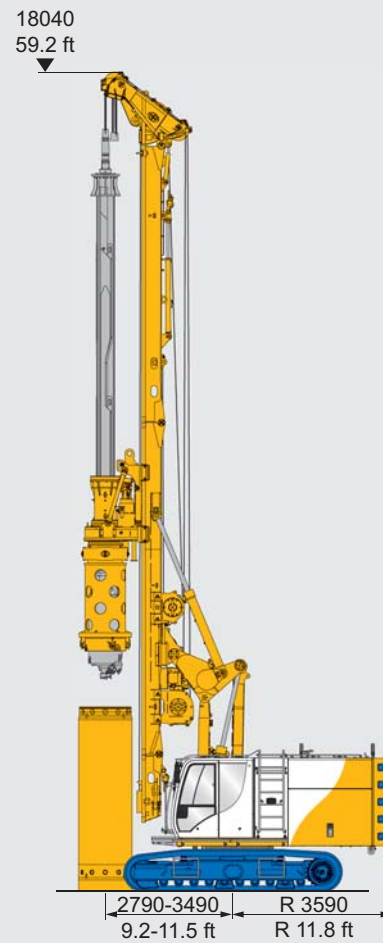
- Remote transmission of machine data (DTR-module)
- Additional camera with monitor for rear area surveillance
- Active mast support

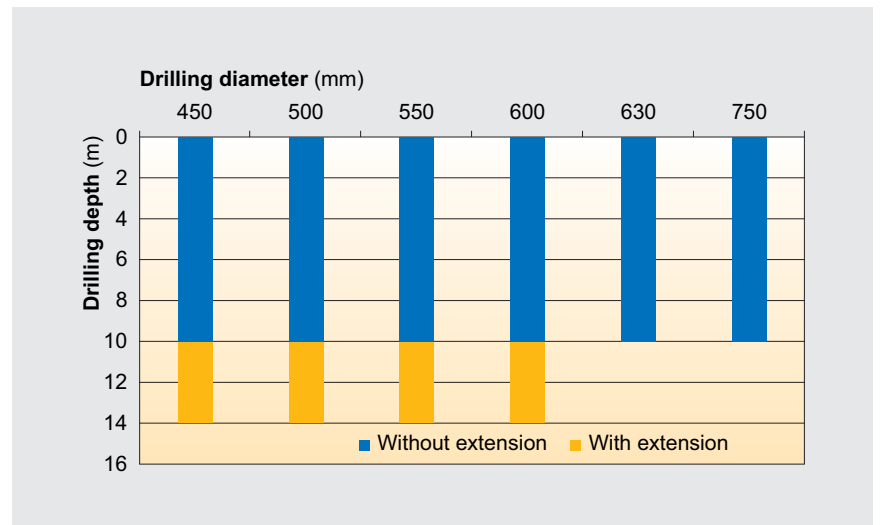
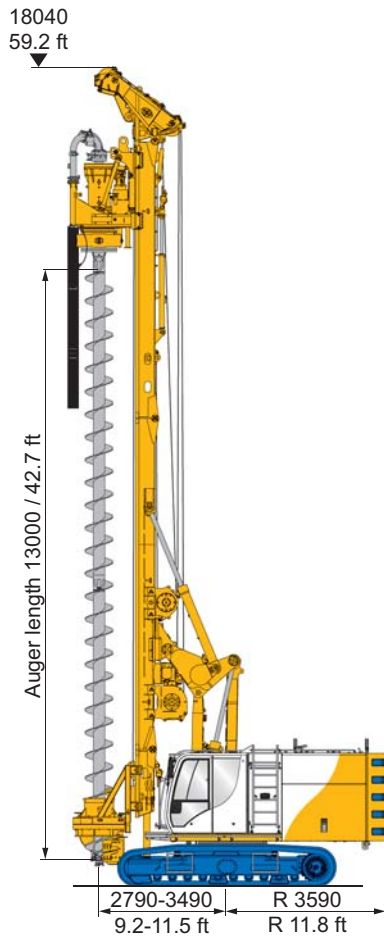


uncased



cased

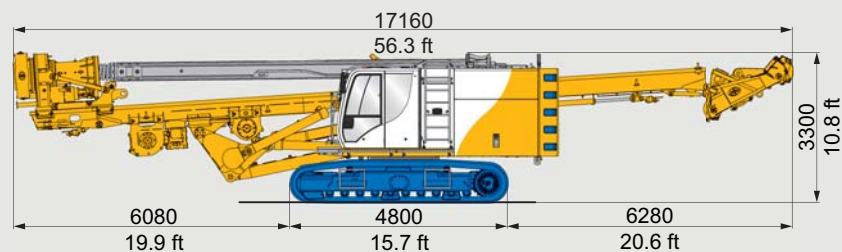




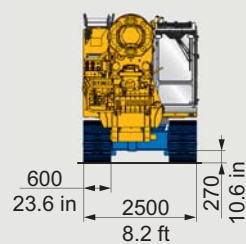
## Transport dimensions and weights

### Side view

G = 48.0 t | 105,822 lb (+ Weight of Kelly bar)  
B = 2,500 mm | 98.4 in

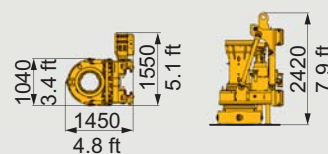


### Front view



### Rotary Drive

G = 4,5 t | 9,921 lb  
B = 1,550 mm | 5.1 ft







# BAUER Service



Global Network



Service



Equipment



Training

## International Service Hotline

**+800 1000 1200\* (freecall)**

**+49 8252 97-2888**

**BMA-Service@bauer.de**

**24/7**



**BAUER Maschinen GmbH**  
**BAUER-Strasse 1**  
**86529 Schrobenhausen**  
**Germany**  
**Tel. +49 8252 97-0**  
**bma@bauer.de**  
**www.bauer.de**

Design developments and process improvements may require the specification and materials to be updated and changed without prior notice or liability. Illustrations may include optional equipment and not show all possible configurations. These and the technical data are provided as indicative information only, with any errors and misprints reserved.