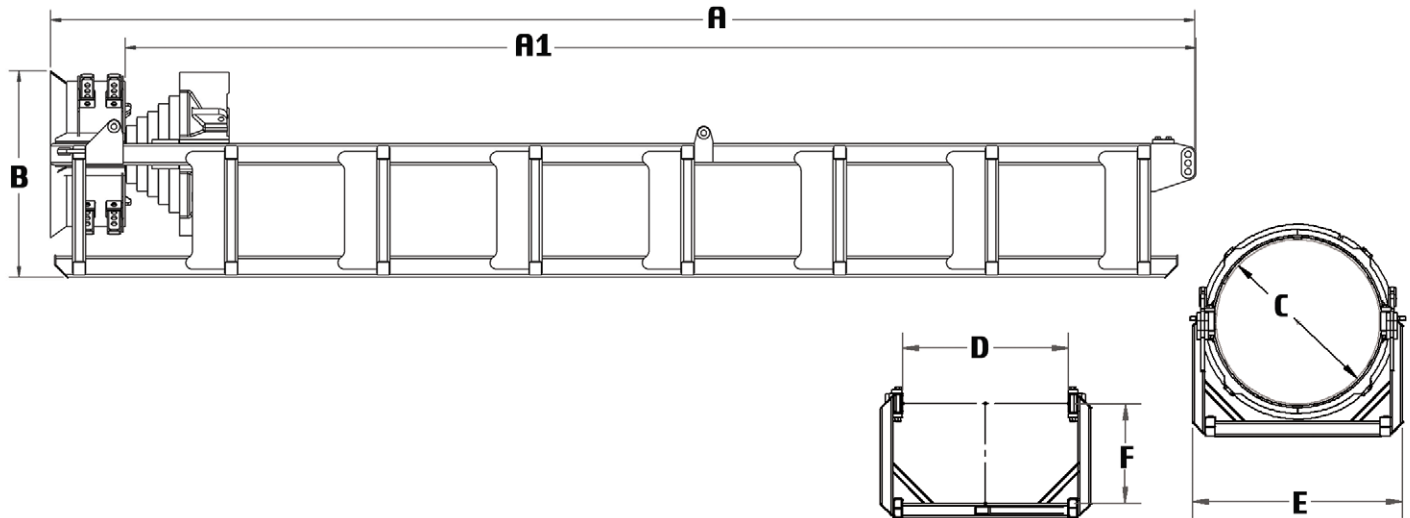




OFFSHORE LEAD A104 SERIES



Standard Units

Lead Type and P#	A	A1	B	C=pile Ø	D	E	F	Lead Weight lbs	Helmet	Weight Total approx. lbs
A104-36 (P-700)	27.2 ft	25 ft	62.5 in	36 in	42.5 in	58.5 in	29 in	5,757	P-514	13,150 lbs.
A104-42 (P-701)	36 ft	33.5 ft	72 in	42 in	48.5 in	66.5 in	37 in	6,108	P-515	22,200 lbs
A104-48 (P-702)	36 ft	33.5 ft	75 in	48 in	54.5 in	72.5 in	39 in	11,908	P-515	28,000 lbs
A104-66 (P-704)	40 ft	38.5 ft	85 in	66 in	66.5 in	84.5 in	40 in	13,880	P-516	43,861 lbs

Metric Units

Lead Type and P#	A	A1	B	C=pile Ø	D	E	F	Lead Weight Kg	Helmet	Weight Total approx. kg
A104-36 (P-700)	8.3 m	7.62 m	158.8 cm	91.4 cm	108 cm	148.6cm	73.7cm	2,611	P-514	5,965 kg
A104-42 (P-701)	11 m	10.21m	182.9 cm	106.7 cm	123.2 cm	169cm	94cm	2,771	P-515	10,070 kg
A104-48 (P-702)	11 m	10.21m	190.5 cm	121.9 cm	138.4 cm	184.2cm	99.1cm	5,198	P-515	12,497 kg
A104-66 (P-704)	12.2 m	11.7 m	216 cm	167.6 cm	169 cm	214.6 cm	101.6cm	6,296	P-516	19,895 kg