

# BAUER

# Equipment Management

## WEB-BGM

*Electronics*



## Anywhere ... from everywhere

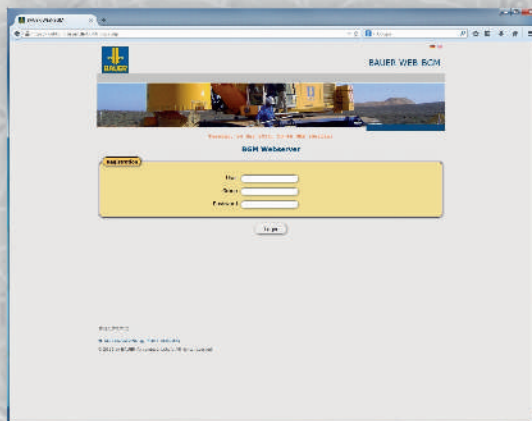
With WEB-BGM you have a worldwide, safe access via your internet browser (desktop or mobile) to the current status of your equipment, anytime, anywhere.

All data are saved on a secured web server for your documentation and further analysis.

The internet connection of the equipment through our DTR Module additionally allows you to operate a local, password-protected WLAN hot spot at the construction site and exchange data between equipment, tablet and internet.

## Overview and customer's benefit of WEB-BGM functions

- Status of complete equipment at a glance, using the traffic light color scheme
- Operating hours reporting for capacity utilization recording and forward-looking resource planning (fleet management)
- Up-to-date, precise location display of equipment for monitoring specified site of operation, incl. alarm function
- Integrated production data analysis (B-Report) for monitoring and documentation of construction process
- (Live) online display and documentation of engine and equipment data for assessment of machine status, incl. e-mail messaging in case of critical conditions
- (Live) online display of operator's screen to support operator from afar
- Display and analysis of messages (incl. e-mail messaging) for fast reaction and spare parts supply
- Display of maintenance and service information for manpower planning of service personnel and spare parts management
- On one's own responsibility rights management allows definition of administrators, groups and users with its different roles for individual access to data
- Event-triggered, automatic data upload (production data, events)
- Export possibility of data for use in own evaluation programs
- No local installation, always up-to-date
- Multi-language

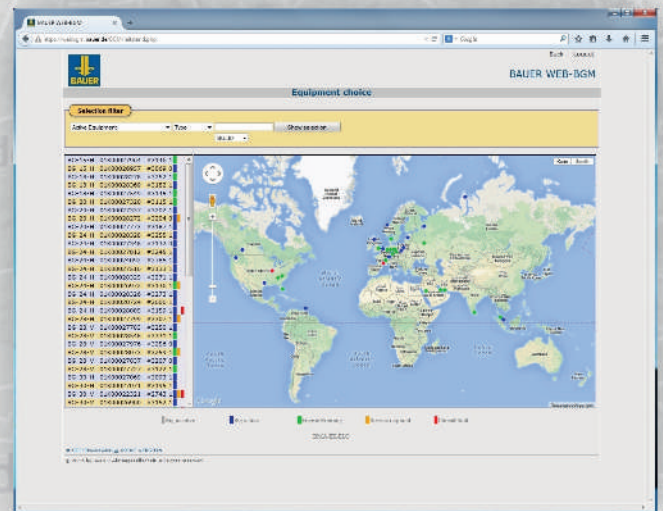




# Everything O.K.?

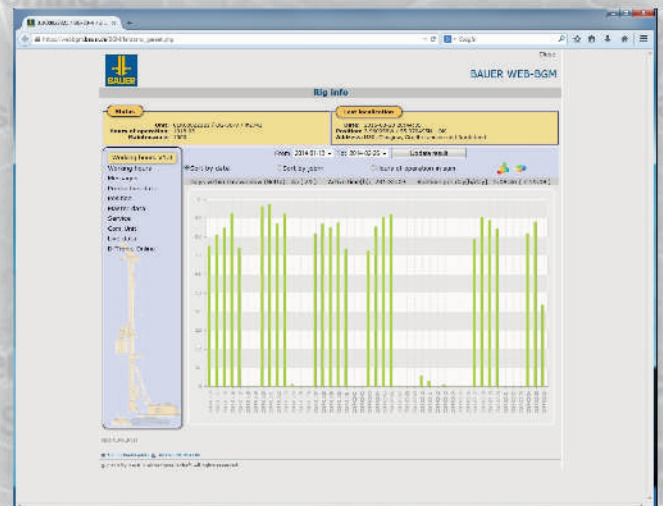
**Fast status overview of complete equipment, incl. positions, using traffic light symbols**

- Positions on a map and status of all machines at a glance
- Traffic light symbols for status: from “red”- critical malfunction to “green”- equipment is ready
- Filterable selective list
- Scalable map, traditional or satellite view



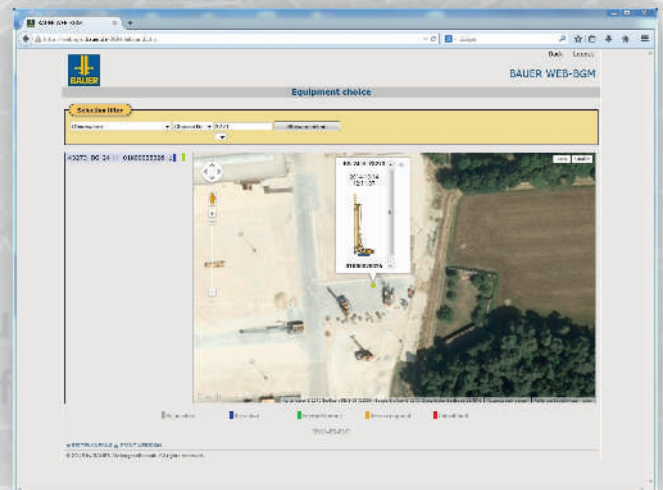
**Fast overview of operating hours and positions of all equipment for capacity utilization recording, reports, accounting and forward-looking resource planning**

- Filterable selective list (date, period, equipment)
- As spreadsheet, bar or pie chart



**Up-to-date, precise location display of equipment for monitoring specified site of operation**

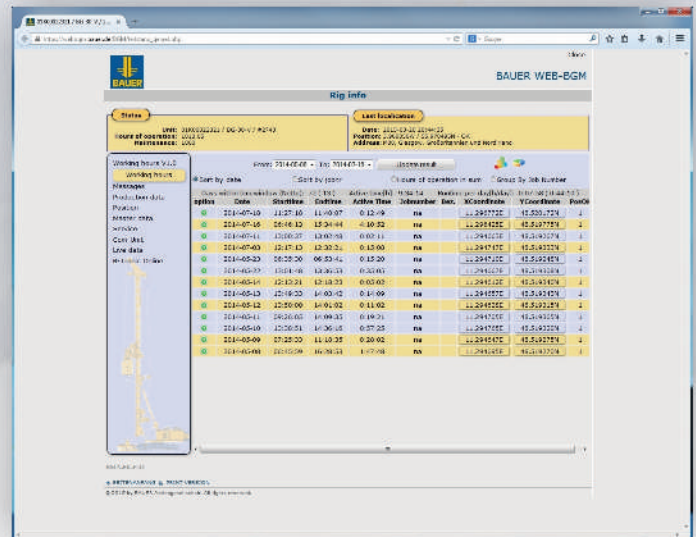
- Scalable map, traditional or satellite view
- Location logging also when equipment is shutdown



## Fast and up-to-date status of construction site progress

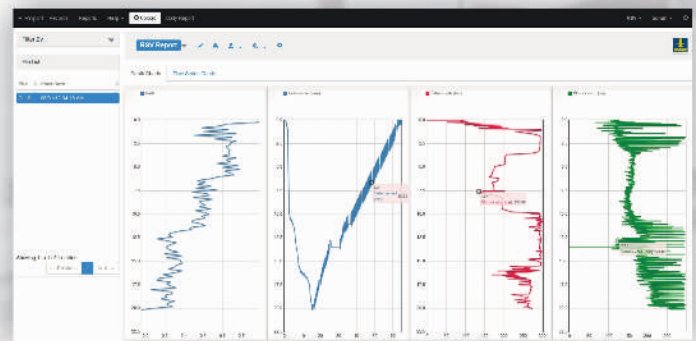
Fast overview of operating hours of all equipment at one construction site

- Filterable selective list (date, period, equipment)
- As spreadsheet, bar or pie chart
- Display of fuel consumption



Display of production data in details for assessment of productivity

- Graphical presentation over time or depth
- Display of idle times
- Highlighting of single points
- Automatic upload of completed pile data





# Performance of your construction site at a glance with B-Report

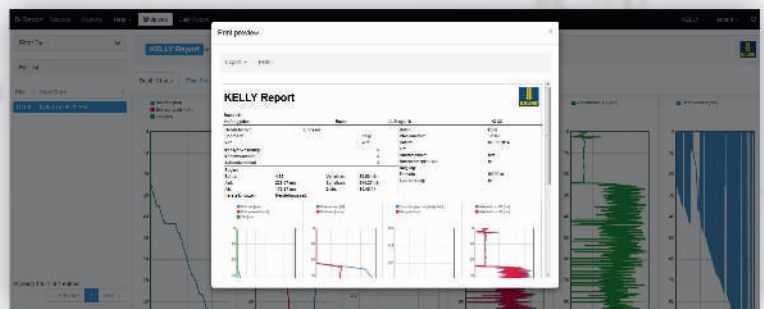
## Daily report with export possibility

- Filterable selective list (date, order no., equipment)
- Display of pile data

DATE	ORDER NO.	EQUIPMENT	DRILLER	OPERATOR	START TIME	END TIME	DRILL DEPTH	DRILL RATE	DRILL VOLUME	DRILL WEIGHT	DRILL LENGTH	DRILL DURATION	DRILL STATUS	DRILL COMMENTS
2019-03-15	1000000001	BAUER BG 100	John Doe	John Doe	08:00	12:00	10.00m	0.50m/min	5.00m³	1000kg	10.00m	04:00	OK	Drill completed successfully.

## Standard reports for documentation of construction site progress and proof of performance and quality

- Individual influence on graphical layout of report (e.g. company logo)



## Detailed reports with individually selectable data of machine and production

- As text or 2D graphics
- Manually added operator's data are saved in addition

DATE	ORDER NO.	EQUIPMENT	DRILLER	OPERATOR	START TIME	END TIME	DRILL DEPTH	DRILL RATE	DRILL VOLUME	DRILL WEIGHT	DRILL LENGTH	DRILL DURATION	DRILL STATUS	DRILL COMMENTS
2019-03-15	1000000001	BAUER BG 100	John Doe	John Doe	08:00	12:00	10.00m	0.50m/min	5.00m³	1000kg	10.00m	04:00	OK	Drill completed successfully.

## With tablet PC in direct contact with site management and service

**(Live) online display of operator's screen to support operator from afar**

- Mirroring of operator's screen, showing current active working process on tablet PC and online in browser
- Documentation of events and displays, supplemented by hand-written comments for e-mail messaging to site management or service



**Access to BAUER CustomerCenter (online), manuals and spare parts lists (on- and offline) for fast availability check and service support**

- Easy and fast search, without extensive browsing in hardcopy files
- Onsite ordering of spare parts
- Reduction of downtime by faster support



**Take photos and videos to document machine status or record processes**

- Communicate fast and easy with site management and service
- Reduction of downtime by faster support





# Monitor equipment status online

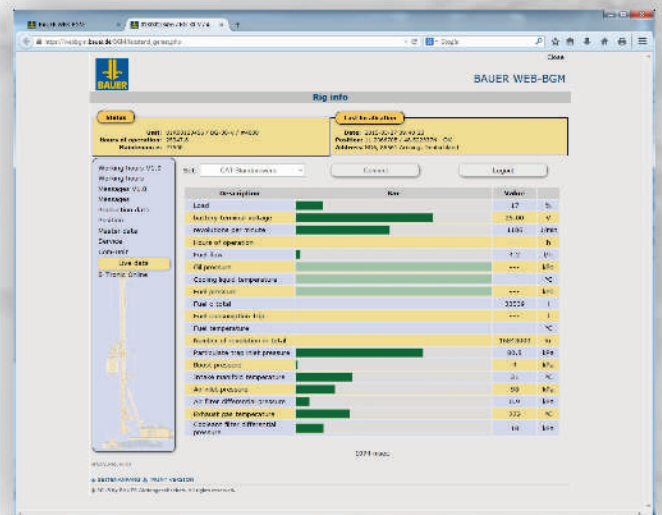
Faster malfunction search and fault detection at site by displaying parameters and sensor data

- Detection of broken sensors
- Check of parameters
- Reduction of downtime by faster support



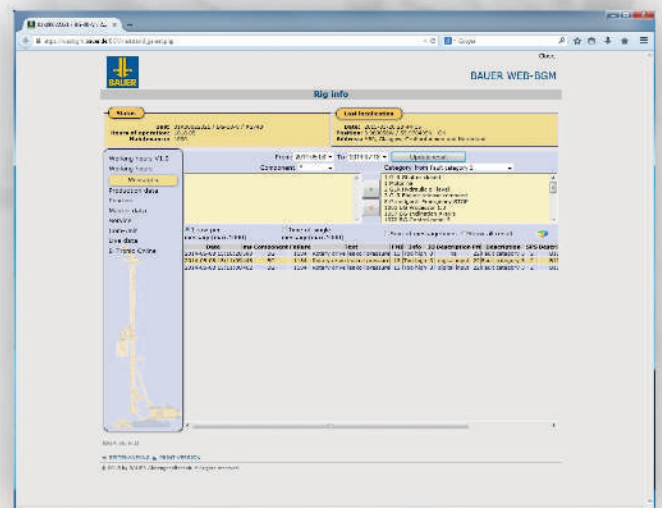
Display of engine and equipment data with one click, cyclic refreshed

- Detection of broken sensors
- Automatic e-mail messaging in case of critical conditions




















Display and analysis of messages (incl. e-mail messaging) for fast reaction and spare parts supply

- Filterable message history
- Display of maintenance and service information for manpower planning of service personnel and spare parts management
- Reduction of downtime by targeted scheduling of service deployment



## WEB-BGM Access Packages

	Basic	Advanced	Professional
Monitoring of operating hours, diesel fuel consumption			
Location display			
(Live) online display of operator's screen			
(Live) online display of engine and equipment data			
Display and analysis of messages (incl. e-mail messaging)			
Display of maintenance and service information			
User management			
Transfer and analysis of current production data (B-Report)			

! Furthermore there is the BAUER CustomerCenter, which offers free-of-charge and fast access to manuals, spare parts and wear part catalogs of your equipment.

Electronics



[bauer.de/en/bma/](http://bauer.de/en/bma/)



**BAUER Maschinen GmbH**  
BAUER-Strasse 1  
86529 Schrobenhausen  
Germany  
Tel. +49 8252 97-0  
[bma@bauer.de](mailto:bma@bauer.de)  
[www.bauer.de](http://www.bauer.de)

Specifications can be updated and changed without prior notice or liability. Illustrations may include optional equipment. All data are provided as indicative information only, with any errors and misprints reserved.