

MADE IN GERMANY

SPEZIALTIEFBAU | FOUNDATION DRILLING



BETEK

BETEK HARTMETALL-WERKZEUGE | BETEK TUNGSTEN CARBIDE TOOLS

SURFACE TECHNOLOGIES

Straßenfräsen
Road Milling

Surface Mining
Surface Mining

Stabilisieren
Stabilising

Brechen & Mischen
Crushing & Mixing

Gleisbau
Rail Track Construction

UNDERGROUND TECHNOLOGIES

Spezialtiefbau
Foundation Drilling

Bergbau
Mining

Tunnelbau
Tunnelling

HDD
HDD

Grabenfräsen
Trenching

TungStuds
TungStuds

Baggeranbaufräsen
Hydraulic Milling Cutters

ENVIRONMENTAL TECHNOLOGIES

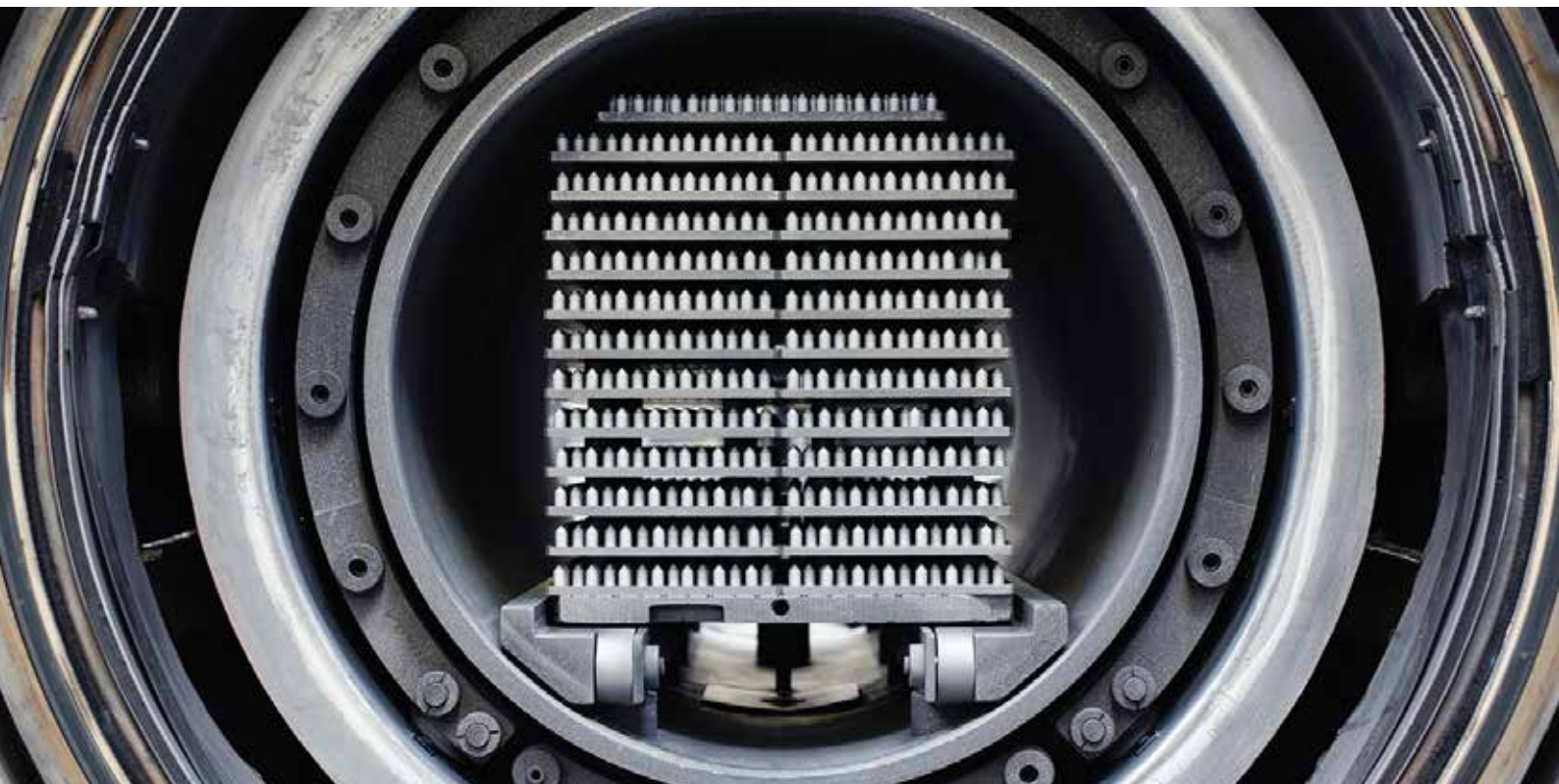
Agrartechnik
Agriculture

Grader Tools
Grader Tools

Hartmetall
Cemented Carbide

Forst und Recycling
Forestry and Recycling

HARTMETALL UND STAHL | TUNGSTEN CARBIDE AND STEEL



BETEK-Werkzeuge entstehen aus Hartmetall und Stahl: Hartmetall für die verschleißfeste Meißelspitze, Stahl für Meißelkopf und Werkzeugschaft. Um die beiden Materialien dauerhaft zu verbinden, wurden bei BETEK eigene Verfahren und spezielle Lötanlagen entwickelt. Die Verlotung der beiden Materialien erfolgt mit Überwachung und Dokumentation der Fertigungsparameter. Zusätzlich wird die Lötung auf Scherfestigkeit geprüft.

Dieser Aufwand zahlt sich im harten Einsatz aus. Die Werkzeuge können dabei sehr heiß werden. Da Hartmetall und Stahl unterschiedliche Ausdehnungseigenschaften bei Wärme haben, treten extreme Zugspannungen auf. Und hier kommt das Speziallot von BETEK ins Spiel, das Hartmetall mit Stahl verbindet. Es nimmt die Zugspannungen auf und hält diesen Stand – damit Helden der Baustelle keine Zeit durch Werkzeugbruch verlieren.

Steel and carbide are two materials with totally different expansion coefficients when subjected to heat. Nevertheless, it is of steel and tungsten carbide that our tools are made, with tungsten carbide for the wear-resistant tip, and steel for the tool shank. Since tools reach high temperatures during use, extreme tensile stresses are generated. These stresses are absorbed by a special brazing material that joins the tungsten carbide tip to the steel section.

We have developed our own methods and systems for this brazing process, which is carried out on fully automated machines with the process covered in an inert protective gas. Manufacturing parameters are fully monitored and documented to ensure consistent quality. Afterwards, brazing shear strengths are checked to ensure that our "Masters of the construction site" lose no time due to broken tools!



KUNDENSERVICE

- Wirtschaftliche Kundenlösungen aufgrund flexibler Strukturen
- Individuelles, schnelles Eingehen auf Kundenanforderungen

ENTWICKLUNG & KONSTRUKTION

- Zeitnahe Realisation von Mustern und Prototypen
- Konkurrenzfähige Preise durch enge Zusammenarbeit mit allen Produktionsbereichen

HARTMETALL-FERTIGUNG

- Verwendung von Rohstoffen hoher Reinheit für hohe Festigkeit
- Konstant hohe, porenfreie Hartmetallqualität durch eine exakte Prozessführung dank jahrelanger Erfahrung und Know-how

PRODUKTIONSBEREICH LÖTEN

Eigens und bis zur Perfektion entwickelte Produktionsanlagen und Fertigungsprozesse von den Experten in der Verbindung von Hartmetall und Stahl

CUSTOMER SERVICE

- Cost-effective client solutions based on flexible structures
- Tailored, fast response to client requirements

DEVELOPMENT & DESIGN

- Speedy creation of samples and prototypes
- Competitive prices thanks to close collaboration with all areas of production

TUNGSTEN CARBIDE MANUFACTURING

- Raw materials of high purity used for great strength
- Consistently high, pore-free tungsten carbide quality produced through an exact process resulting from years of experience and know-how

THE SOLDERING SIDE OF PRODUCTION

Production equipment and processes specially developed to the utmost degree of perfection by experts in combining tungsten carbide and steel

BETEK HIGH-TECH-WERKZEUGE | TOOLS



AUTOMATISIERUNG

Wettbewerbsfähigkeit auf dem Weltmarkt durch einen hohen Automatisierungsgrad und flexible Fertigungsanlagen

QUALITÄTSSICHERUNG

Permanente Qualitätsprüfungen der gesamten Fertigungskette bis zur Baustelle nach DIN ISO 9001:2000 und DIN EN ISO 14001

TRAINING

Anwender-Schulungen im Hause BETEK oder direkt auf der Baustelle für langfristigen wirtschaftlichen Erfolg und Kundenzufriedenheit

LOGISTIK

kurzfristige Reaktionsmöglichkeiten durch

- Einsatz modernster EDV und optimale Logistik-Vernetzung
- Lagerhaltung von Standardprodukten

AUTOMATION

Able to compete on the world market by virtue of a high degree of automation and flexible manufacturing plants

QUALITY ASSURANCE

Permanent checking of quality in accordance with DIN ISO 9001:2000 and DIN EN ISO 14001 along the entire production chain all the way to the construction site

TRAINING

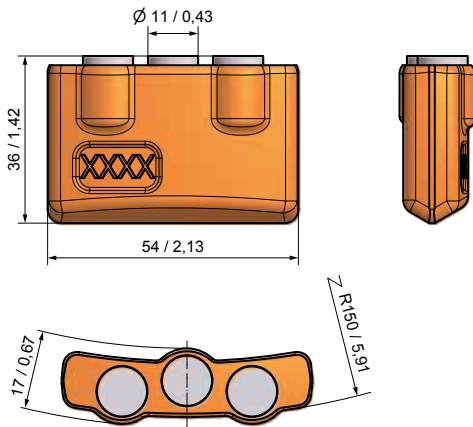
User training sessions at Betek or on the construction site itself to ensure long-term economic success and client satisfaction

LOGISTICS

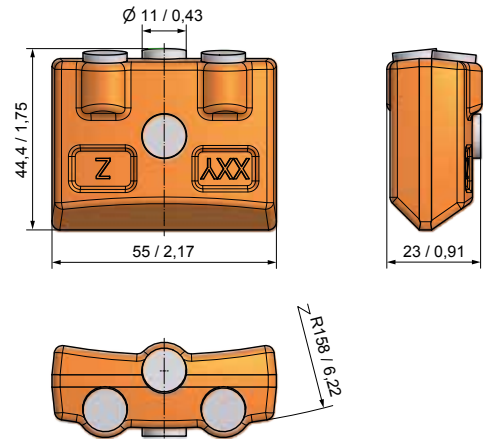
Able to react quickly thanks to:

- The use of cutting edge IT and optimum logistics links
- Standard products kept in store

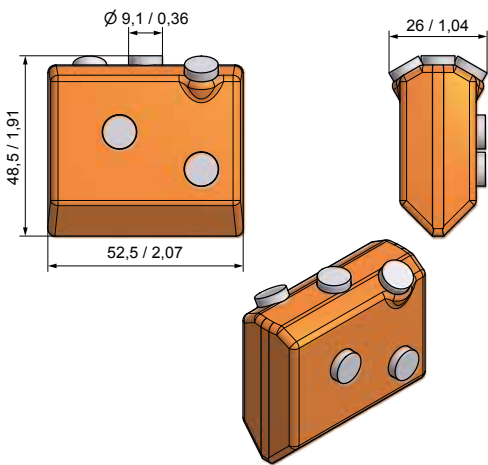
ANSCHWEISSSTOLLEN | WELDING BARS



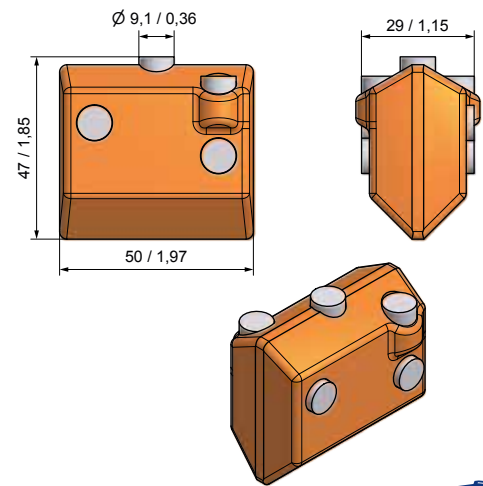
BA12 BA55-17/11/R



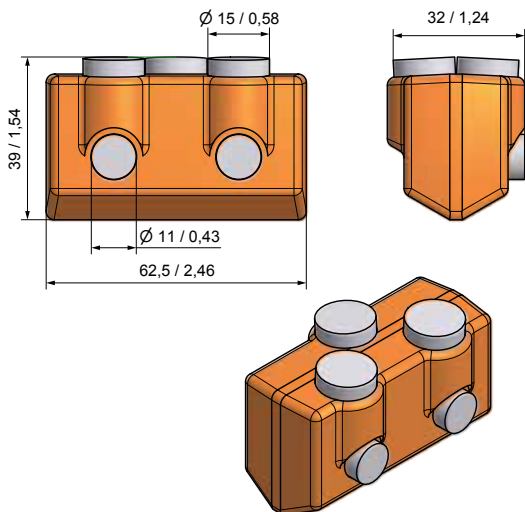
BA13 BA55-22



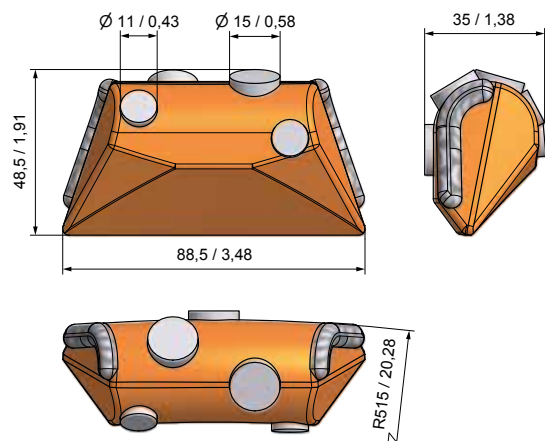
BA10 BA50-26.5



BA09 BA50-29

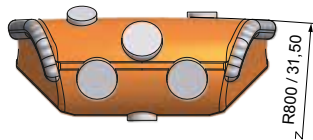
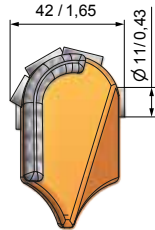
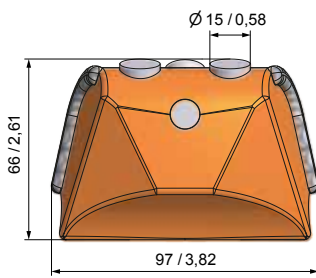


BA32 BA60-32/2

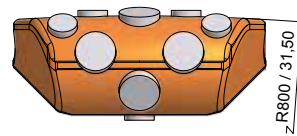
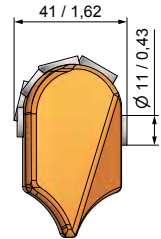
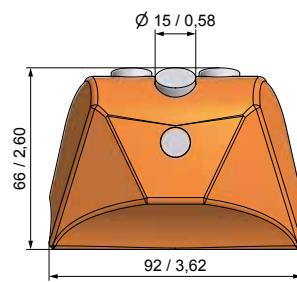


BA01 BA90-35

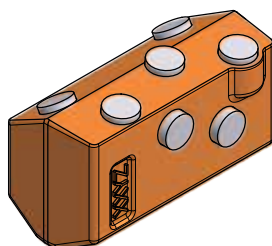
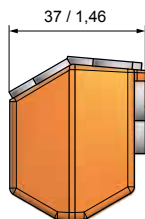
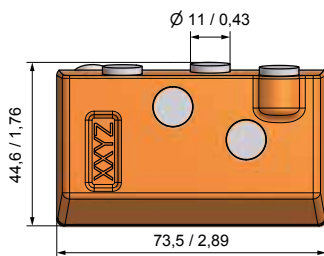




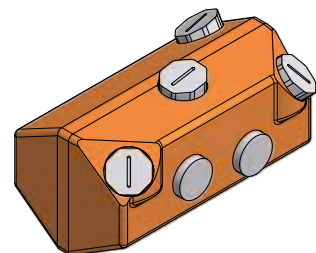
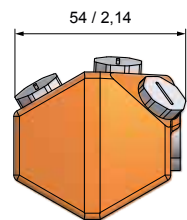
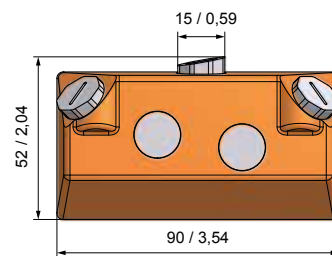
BA24 BA90-42



BA62 BA92-41



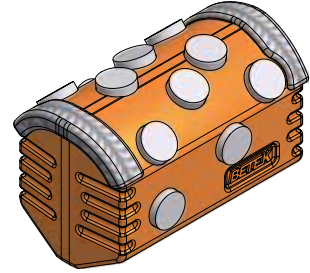
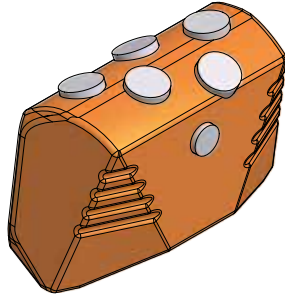
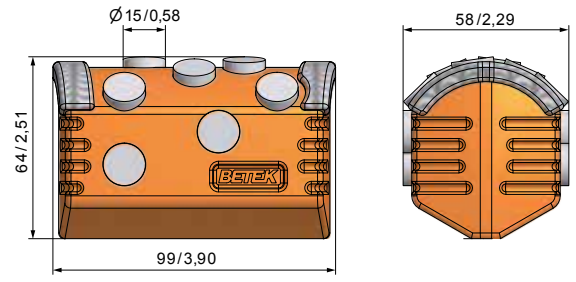
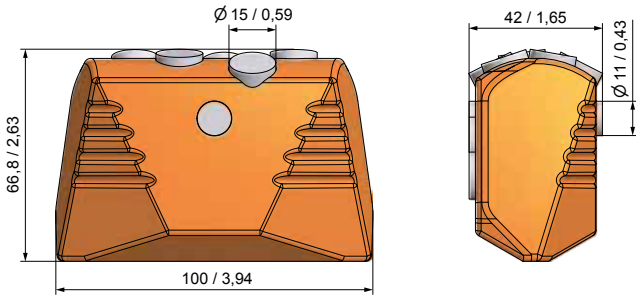
BA04 BA70-38



BA19 BA90-54



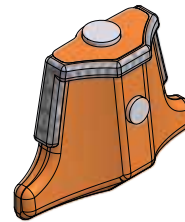
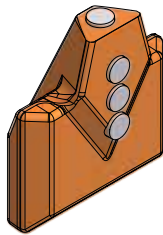
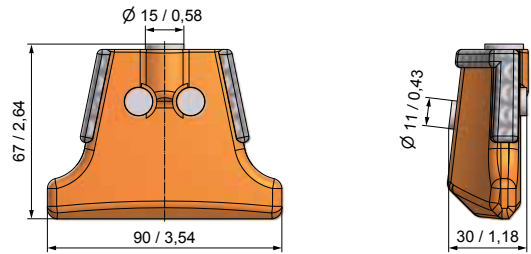
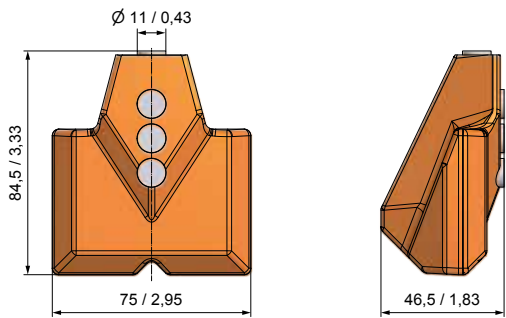
ANSCHWEISSSTOLLEN | WELDING BARS



BA55 BA100-42



BA28 BA90-58/3



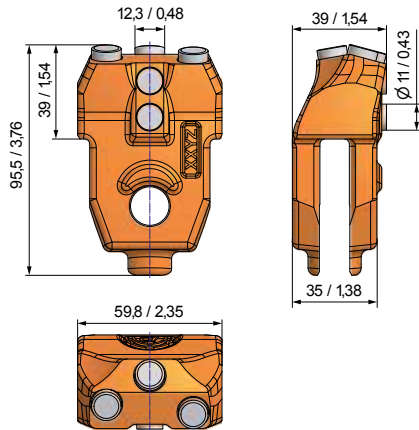
BFZ26 BFZ83x75x45/1



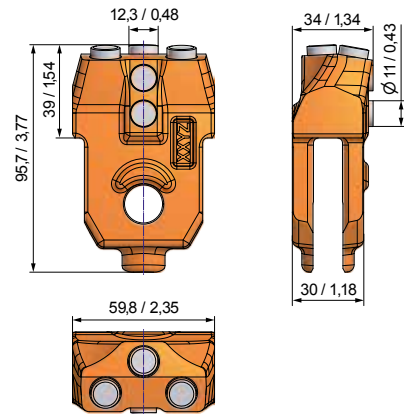
BFZ72/B BFZ65x90x30



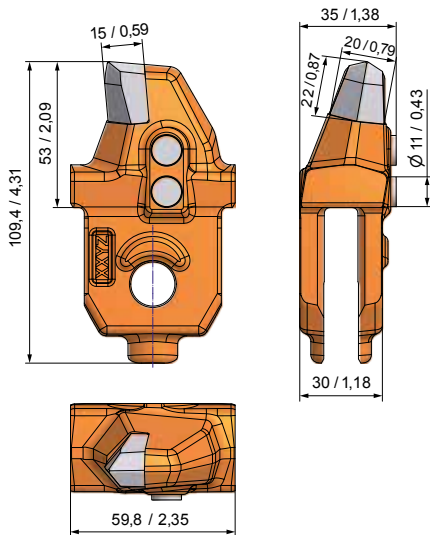
WECHSELSTOLLEN | QUICK CHANGE BARS
 WANDSTÄRKE BOHRROHR | CASING WALL THICKNESS | 30 MM/1,18"



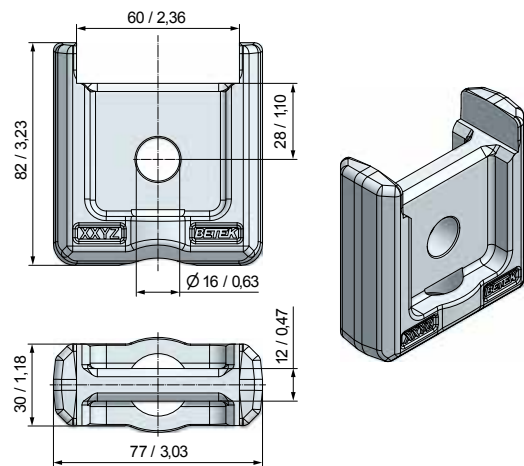
BA58 BA96x60x35



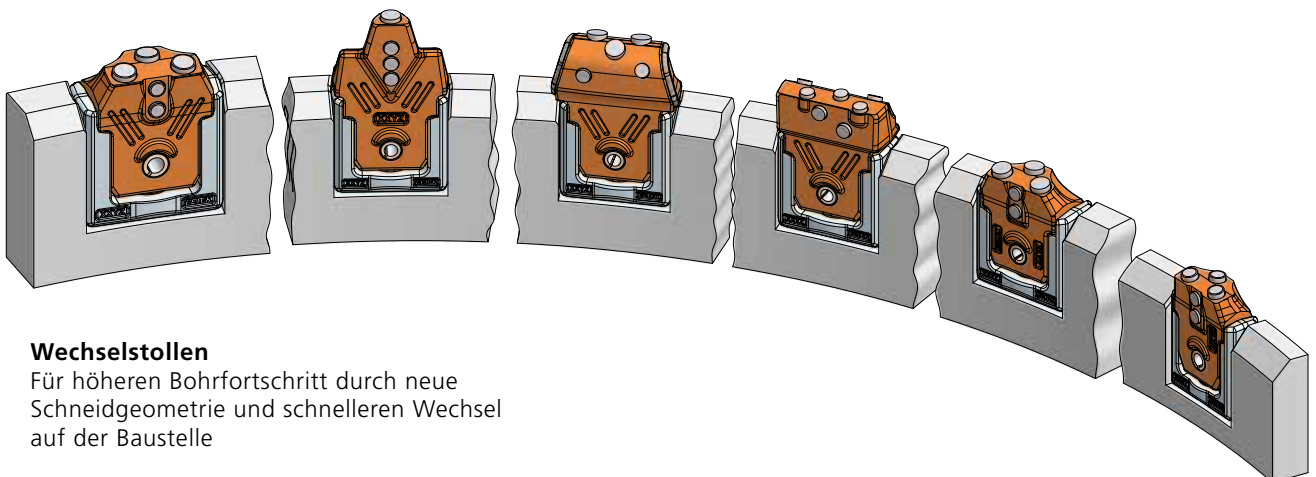
BA60 BA96x60x30



BA61 BA109x60x30



BHA06 BHA77x82x30



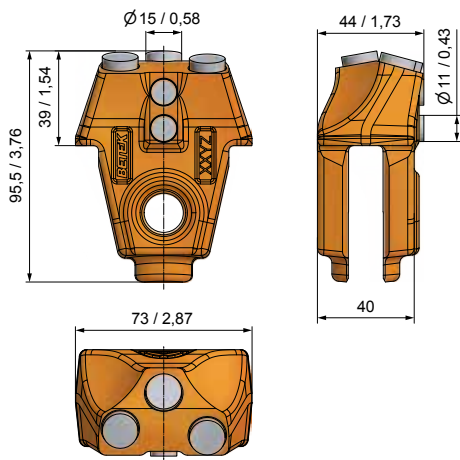
Wechselstollen

Für höheren Bohrfortschritt durch neue Schneidgeometrie und schnelleren Wechsel auf der Baustelle

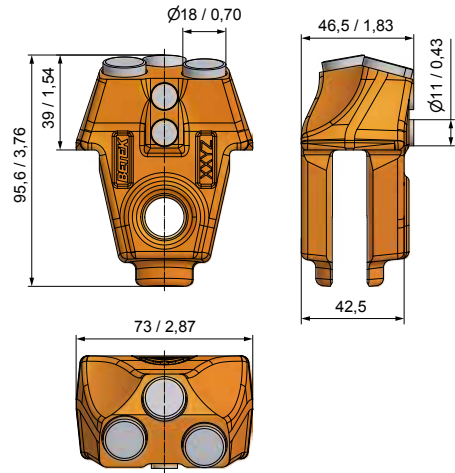
WECHSELSTOLLEN | QUICK CHANGE BARS
 WANDSTÄRKE BOHRROHR | CASING WALL THICKNESS | 40 MM/1,58"



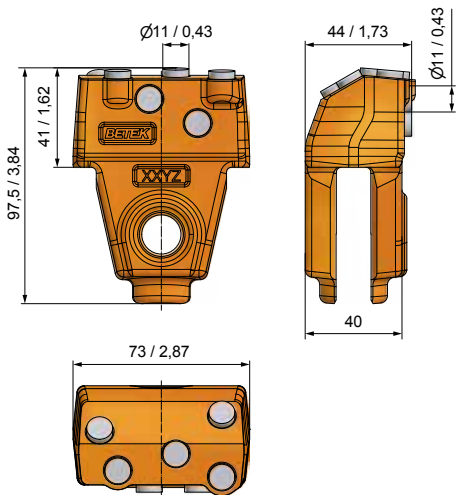
SPH73



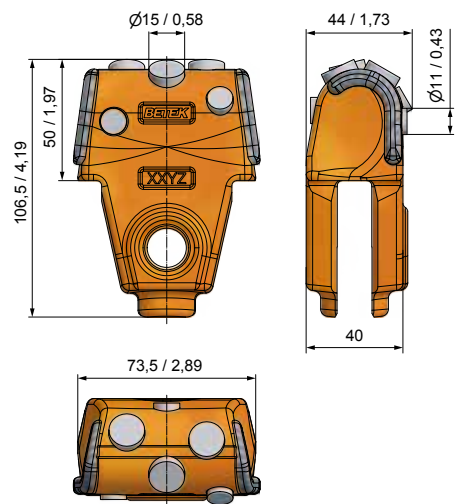
BA63 BA96x73x40



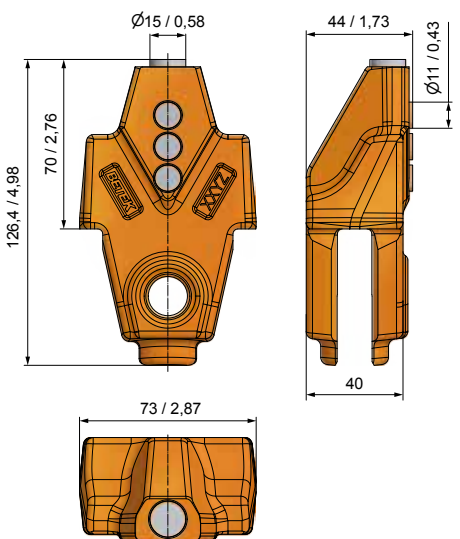
BA65 BA96x73x42,5



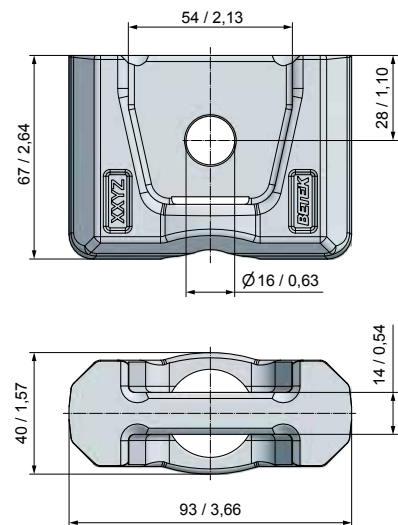
BA66 BA98x73x40



BA67 BA107x77x40



BA68 BA126x73x40



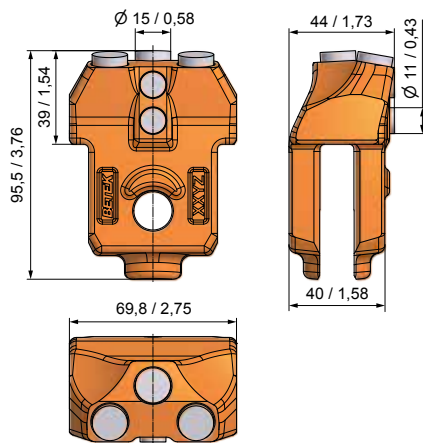
BHA07 BHA93x67x35



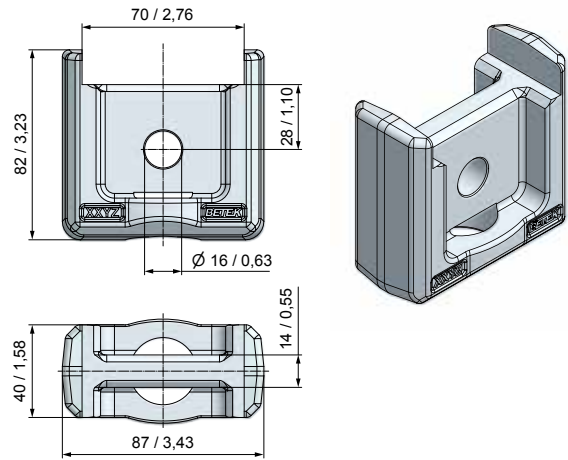
WECHSELSTOLLEN | QUICK CHANGE BARS
WANDSTÄRKE BOHRROHR | CASING WALL THICKNESS | 40 MM/1,58"



SPH73



BA47 BA96x70x40



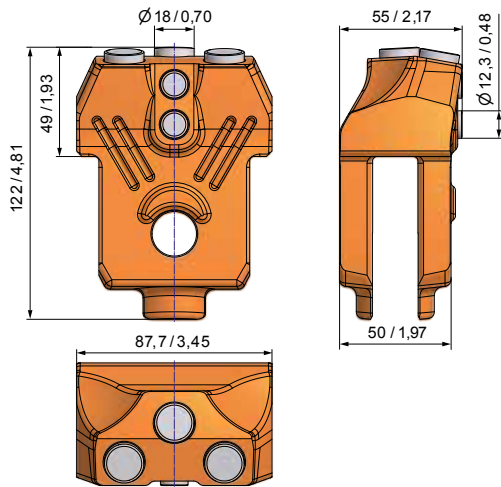
BHA04 BHA87x82x40



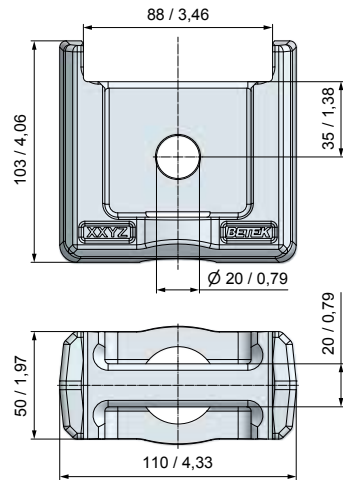
WECHSELSTOLLEN | QUICK CHANGE BARS
WANDSTÄRKE BOHRROHR | CASING WALL THICKNESS | 50 MM/1,97"



SPH84



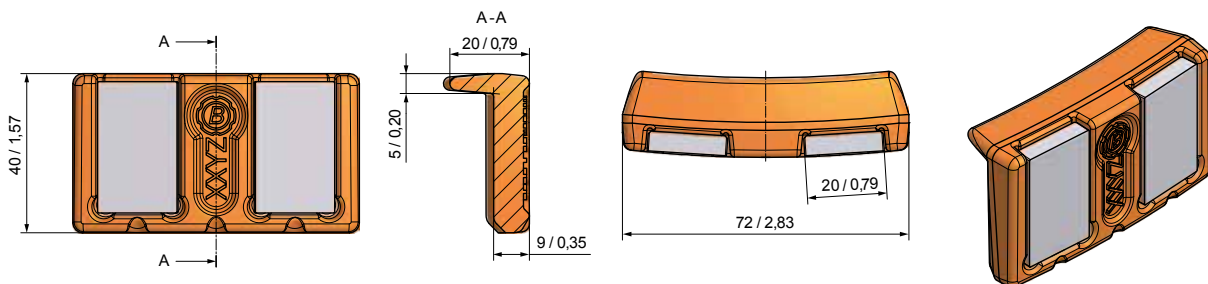
BA53 BA122x88x50



BHA05 BHA110x103x50



KALIBERSCHUTZ FÜR BOHRSCNECKEN | BORE PROTECTION ON AUGERS



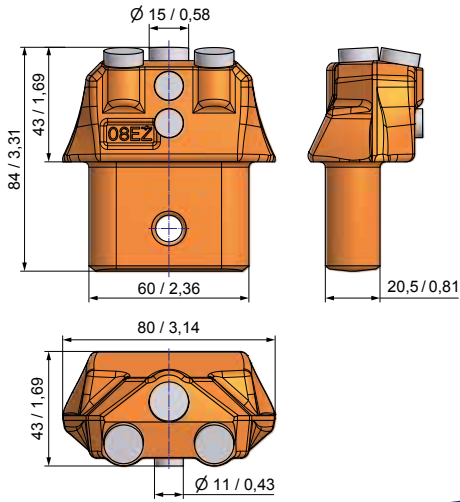
BA54 BA72x40x20



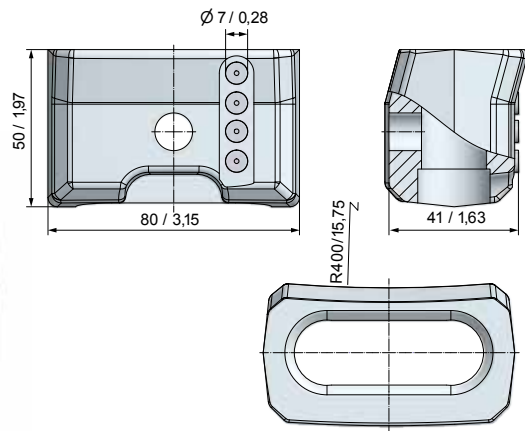
WECHSELSTOLLEN | QUICK CHANGE BARS
 WANDSTÄRKE BOHRROHR | CASING WALL THICKNESS | 40 MM/1,58"



SPH39



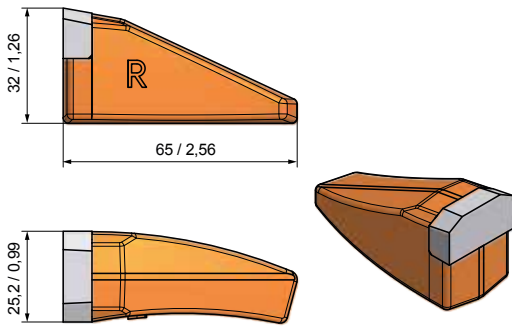
BA46 BA80-31



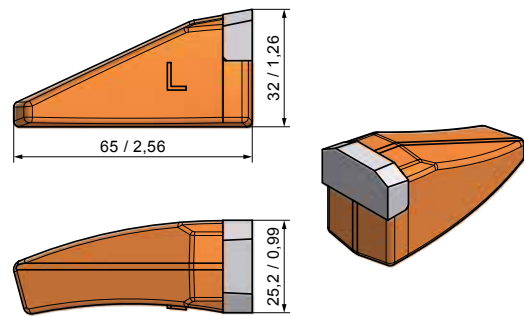
BHA02 BHA60/2



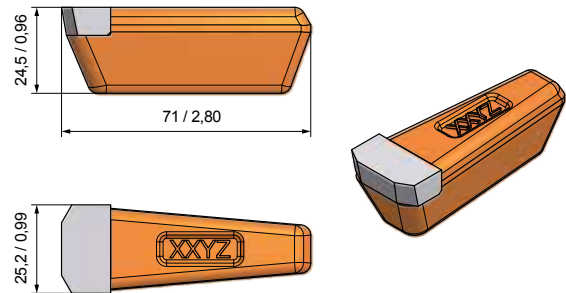
ANSCHWEISSZÄHNE | WELD-ON TEETH



BFZ25R BFZ25-R



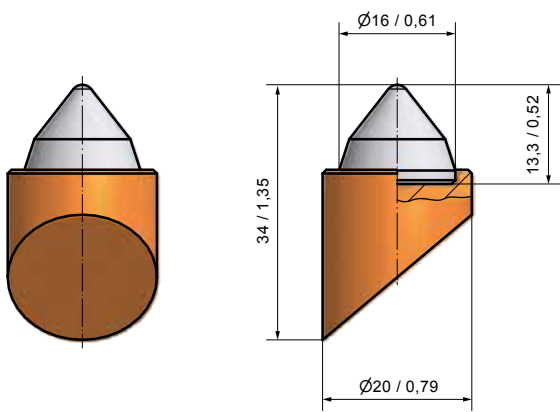
BFZ25L BFZ25-L



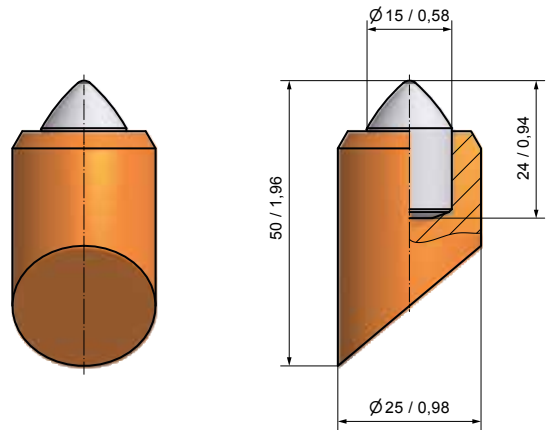
BFZ96 BFZ71x25



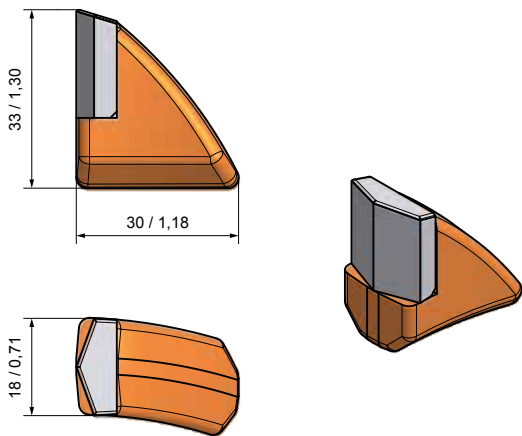
ANSCHWEISSZÄHNE | WELD-ON TEETH



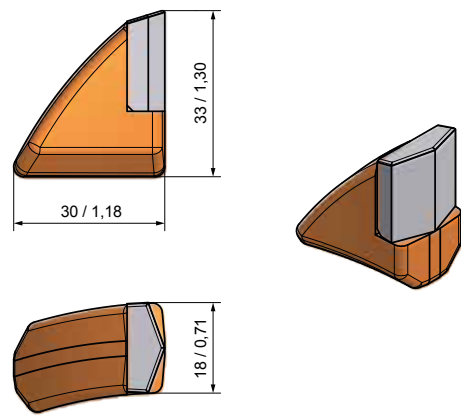
BFZ158 BFZ3



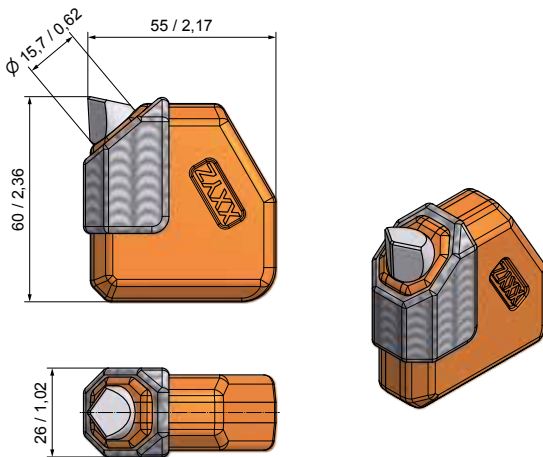
BFZ207 BFZ1



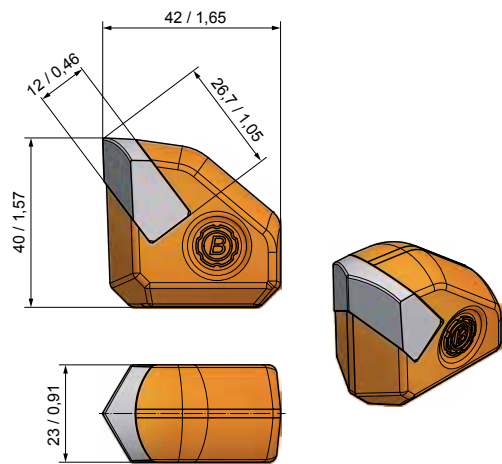
BFZ107 BFZ18/R



BFZ144 BFZ18/L



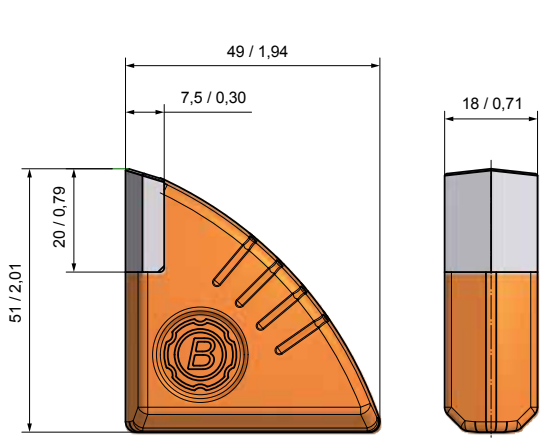
BFZ257 BFZ60x55x22



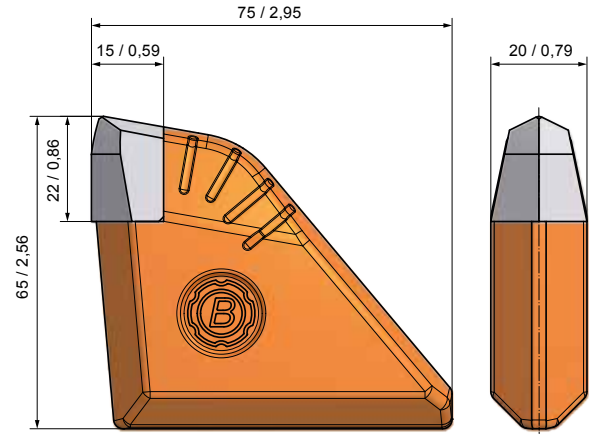
BFZ327 BFZ42x40x23/1



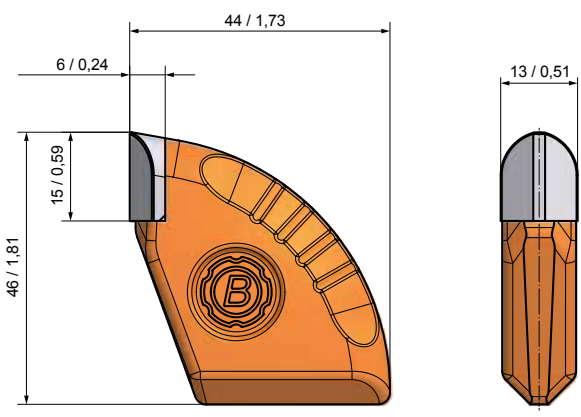
ANSCHWEISSZÄHNE | WELD-ON TEETH



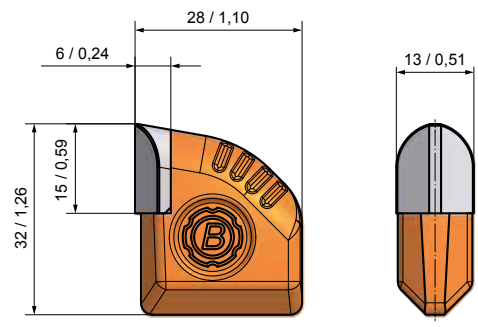
BFZ87 BFZ18/2



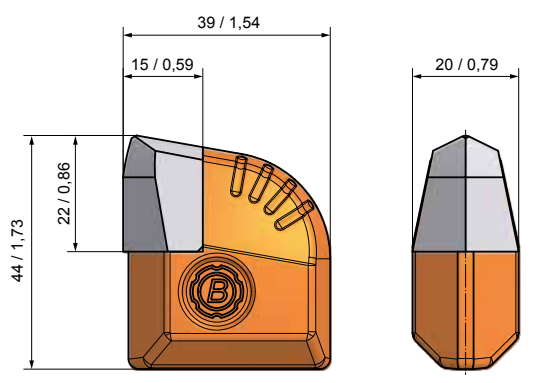
BFZ319 BFZ75x65x20



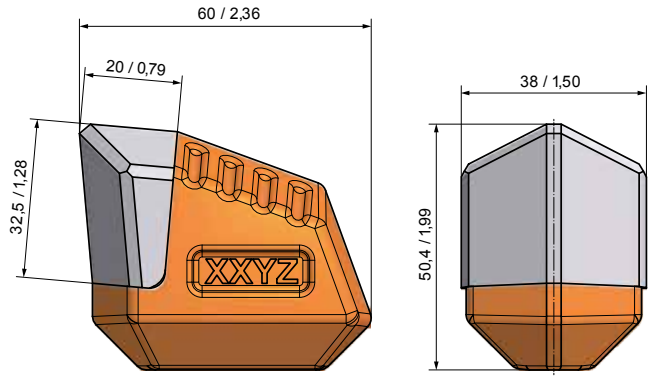
BFZ318 BFZ46x44x13



BFZ321 BFZ32x27x13



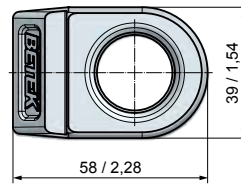
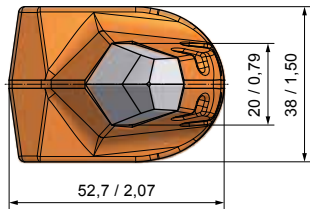
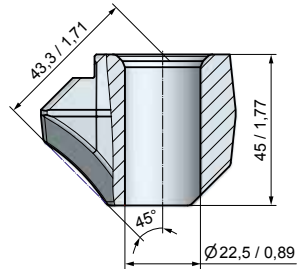
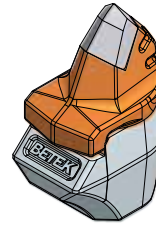
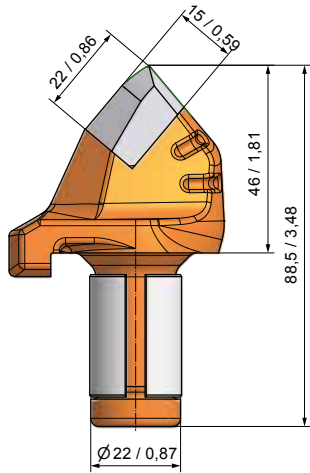
BFZ320 BFZ44x39x22



BFZ326 BFZ38/M



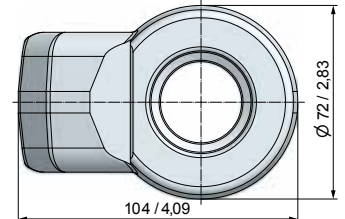
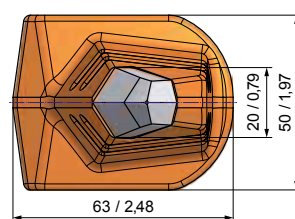
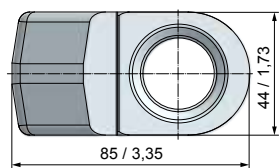
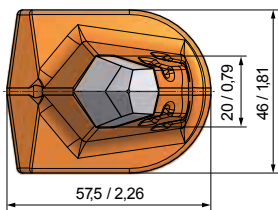
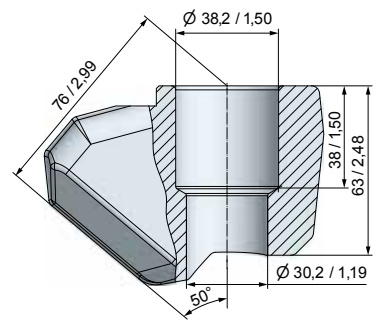
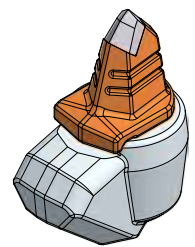
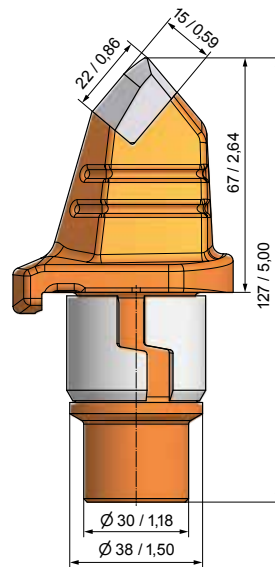
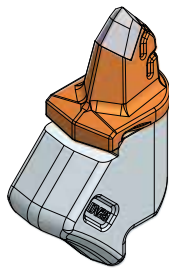
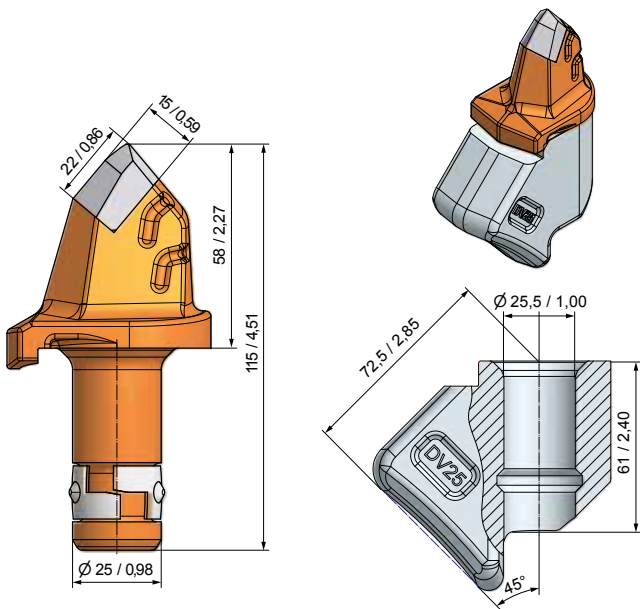
DRAGON TOOTH



BFR07 BFR46-22



BHR133 B10/22-F



BFR08 BFR58-25



BHR184 DV25-F



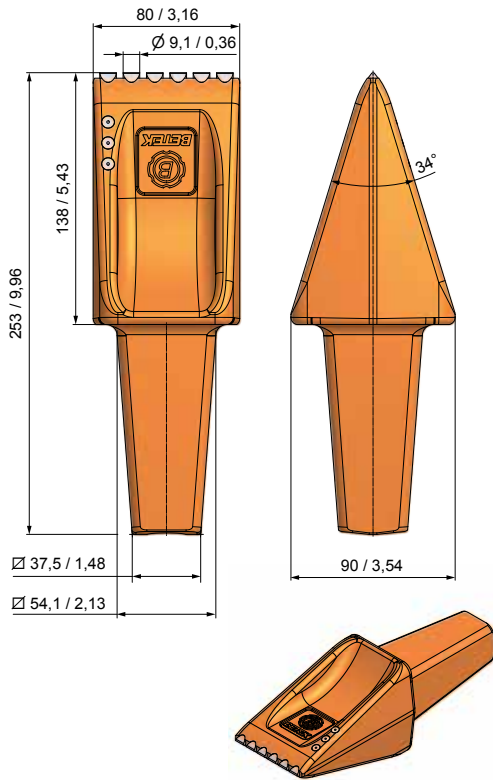
BFR10 BFR67-38/30



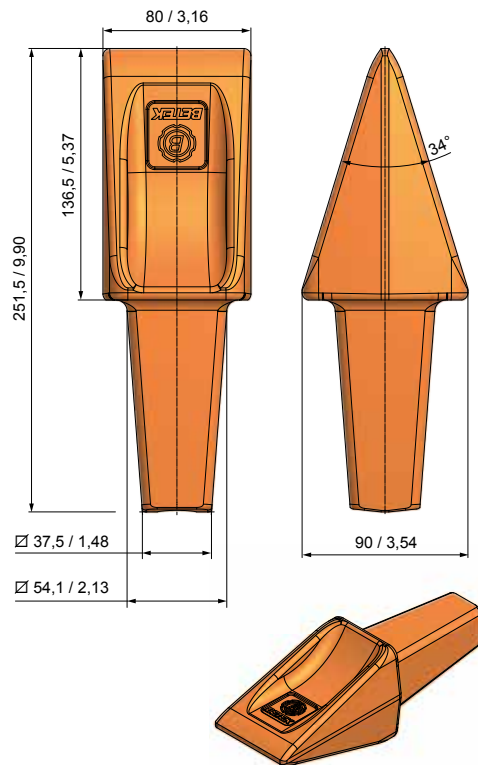
BHR244 B43K-F



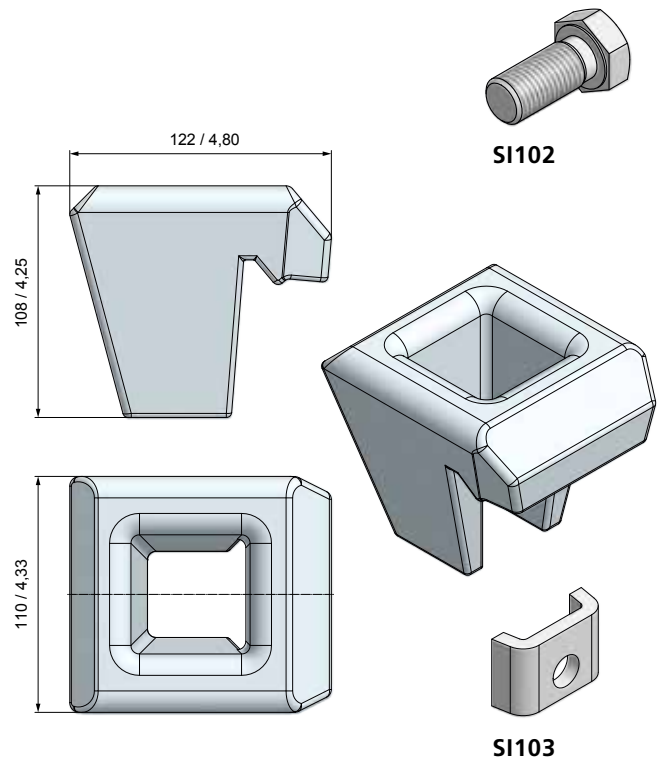
FLACHZÄHNE | FLAT TEETH



BFZ317 BFZ80-B



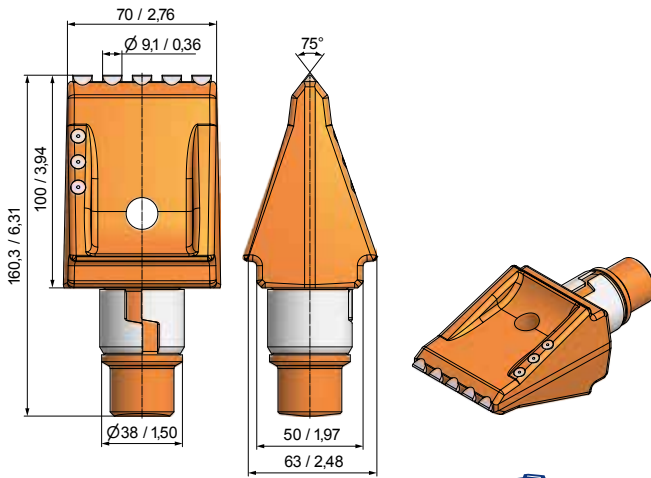
BFZ79 BFZ80OHM



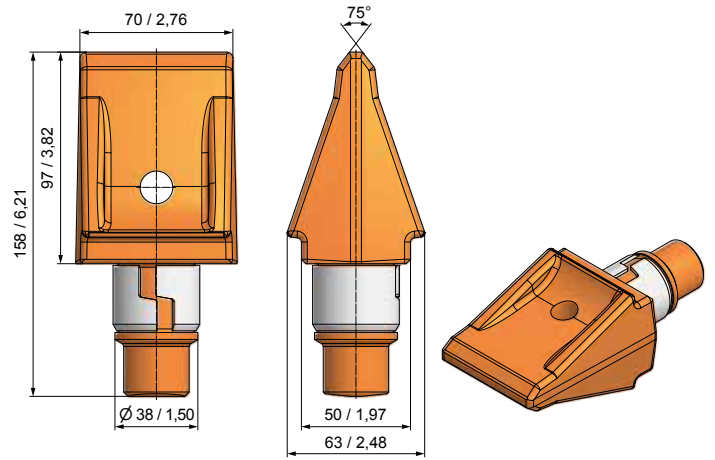
BHR73 BHZ80/2



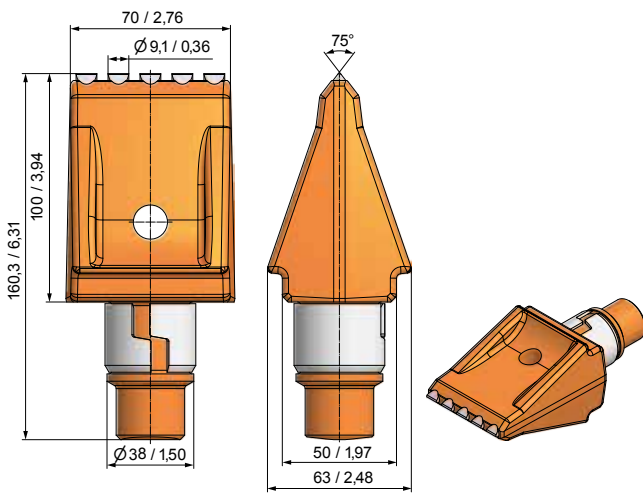
FLACHZÄHNE | FLAT TEETH



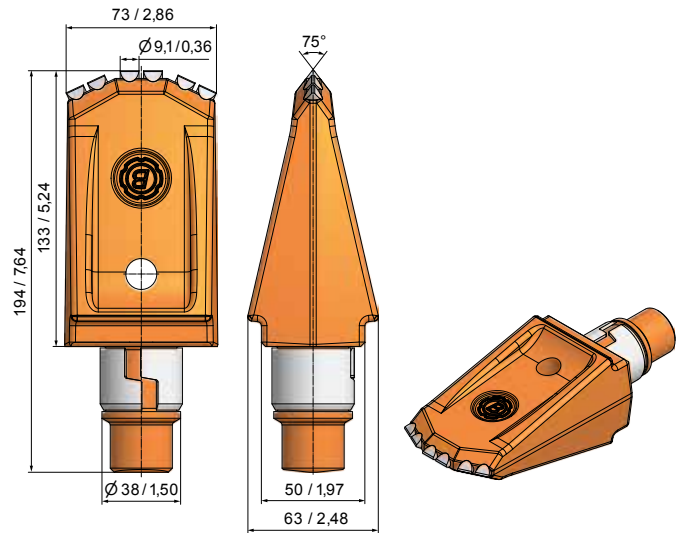
BFZ162 BFZ100x70/2



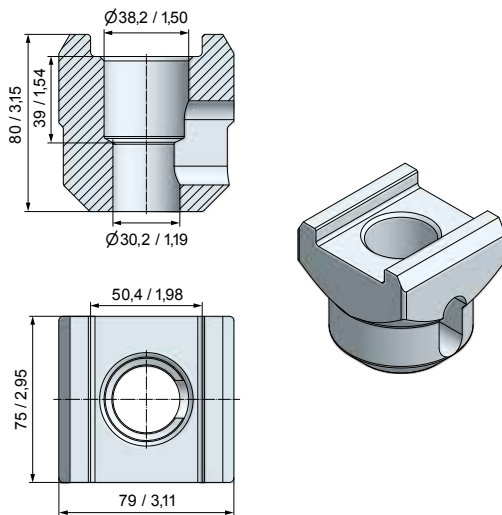
BFZ69 BFZ100x70



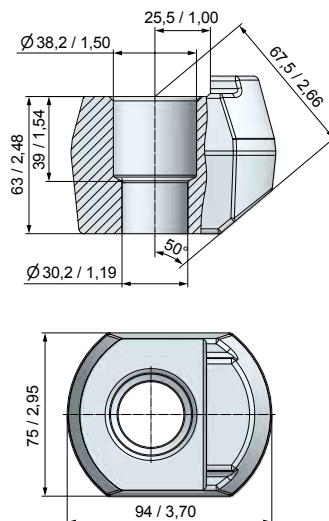
BFZ339 BFZ100x70/4



BFZ322 BFZ133x73/HM



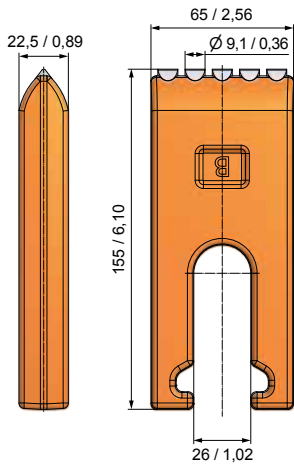
BHR112 B75




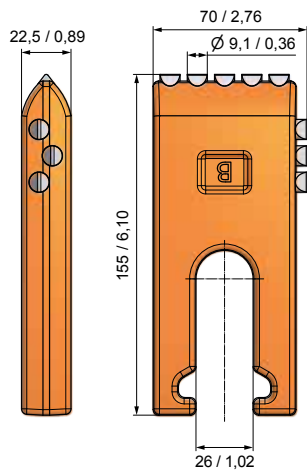
BHR39 B48




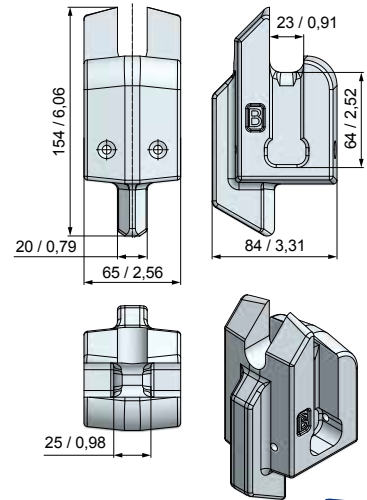
FLACHZÄHNE | FLAT TEETH




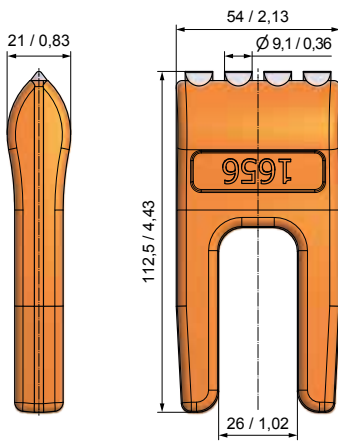
BFZ65HM BFZ65/2 



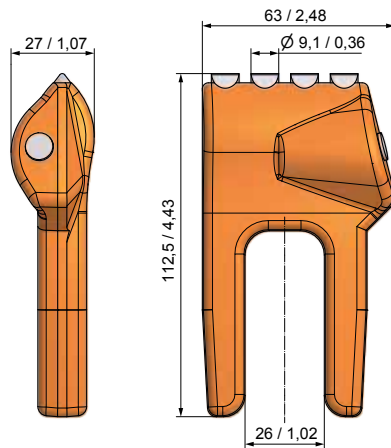
BFZ02 BFZ65/3 



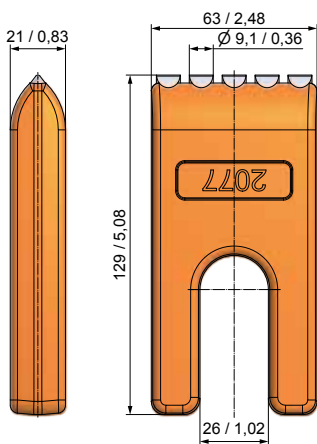
BHF02 B65-22 



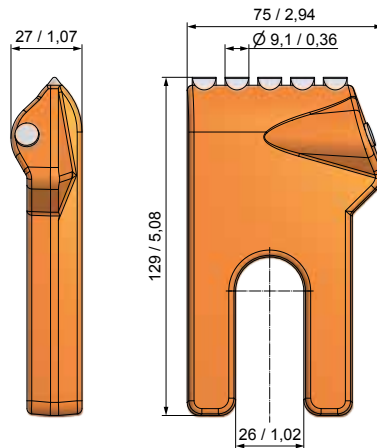
BFZ05N BFZ1656N 



BFZ198N BFZ1658N 

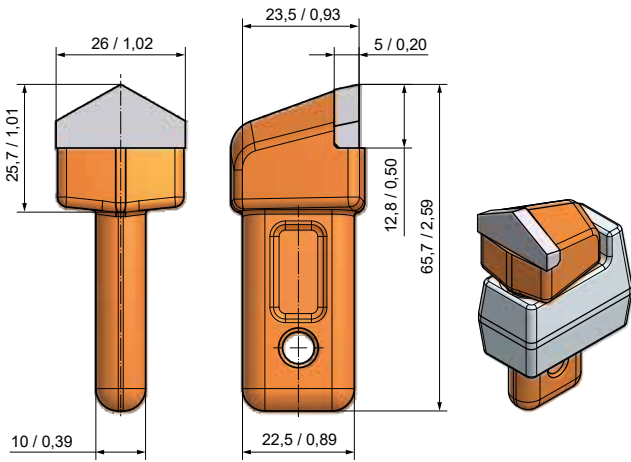


BFZ200N BFZ2077N 

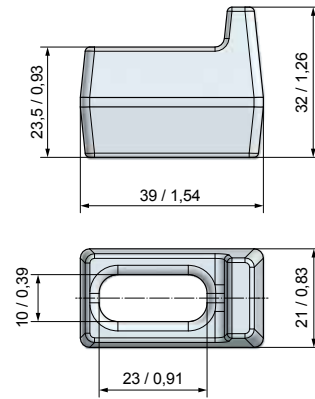


BFZ218 BFZ2078 

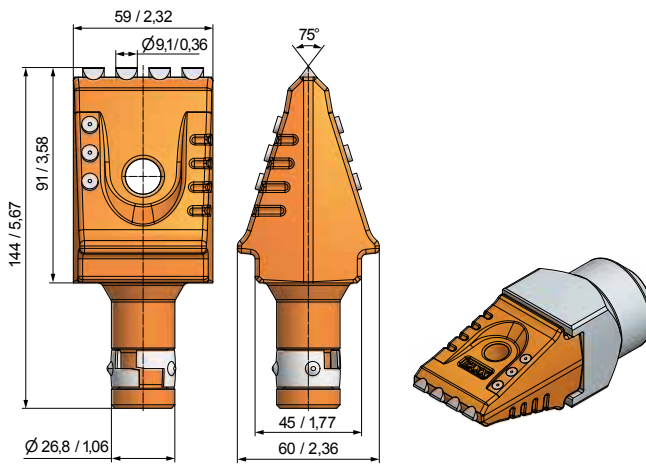
FLACHZÄHNE | FLAT TEETH



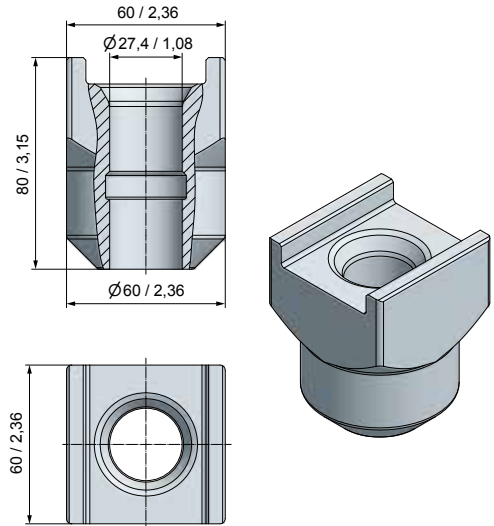
BFZ272 BFZ67x30x26



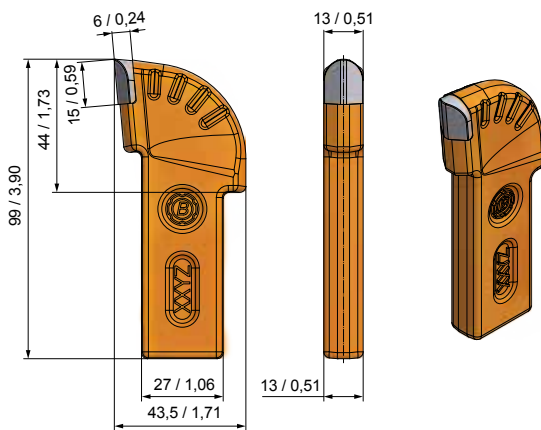
BHZ24 BHZ39x32x21



BFZ324 BFZ91x59



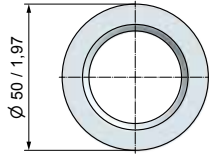
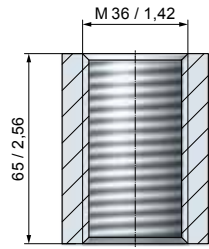
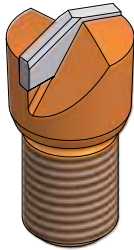
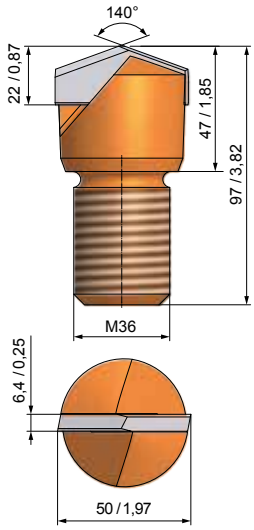
BHR254 B60/27



BF64 BF99x27x13



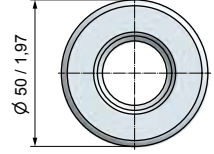
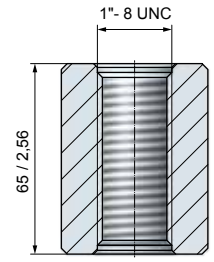
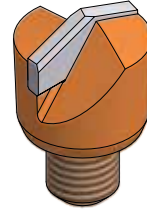
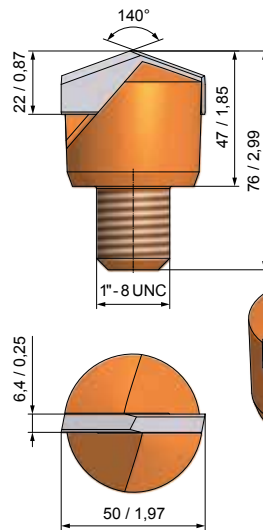
PILOTEN | PILOTS



BP04 BP51/M36-HD3



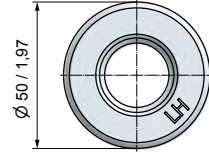
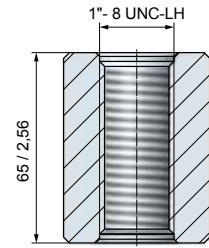
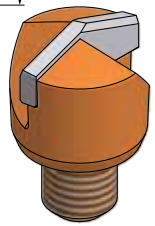
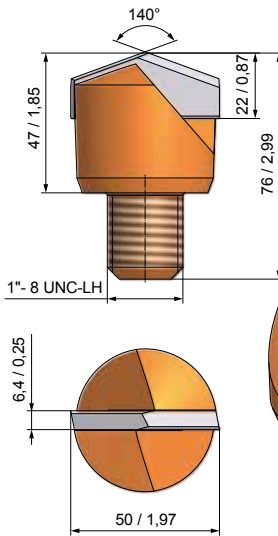
BPH01 GH-M36



BP01 BP51/1"-HD3



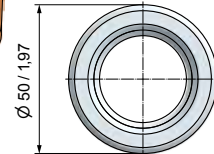
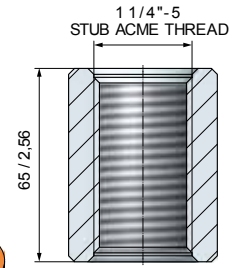
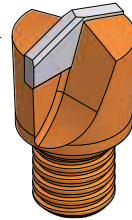
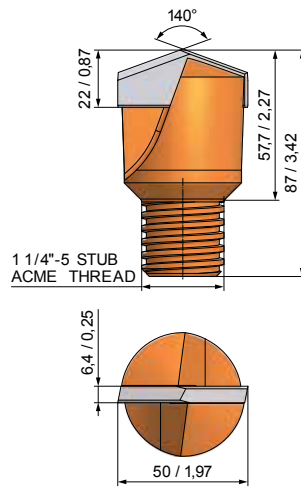
BPH02 GH-1"



BP10 BP51/1"-HD3/LH



BPH03 GH-1" LH



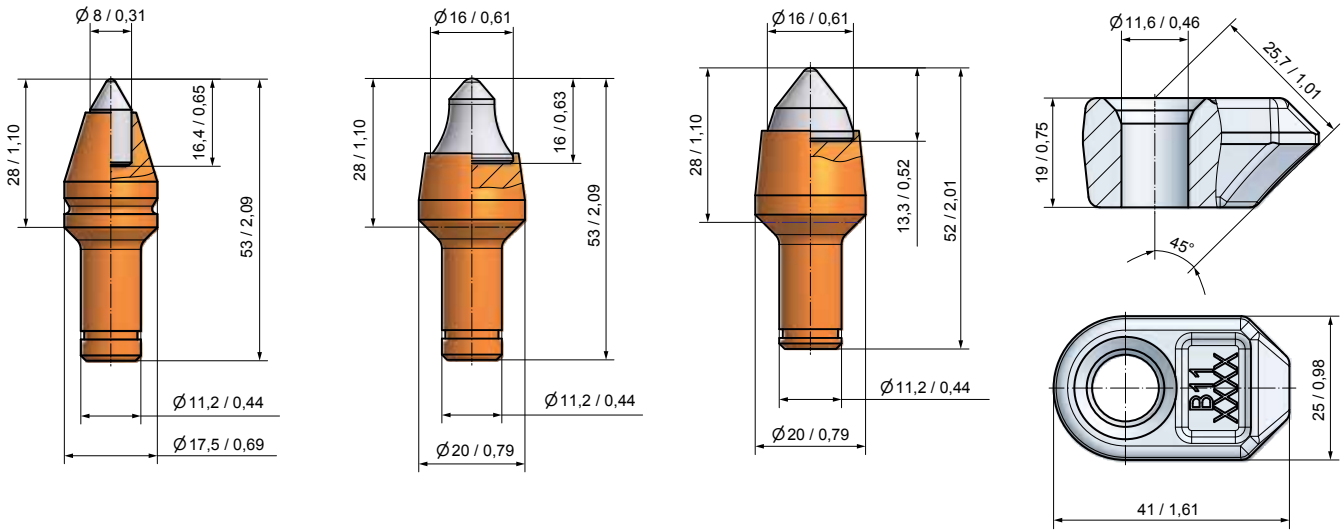
BP51 BP51x87



BPH04 GH-1 1/4"-5



SCHAFTSYSTEM | SHANK SYSTEM | Ø 11 MM/0,43"



BM11 BM8-11.3



BM10 BM4-11.3



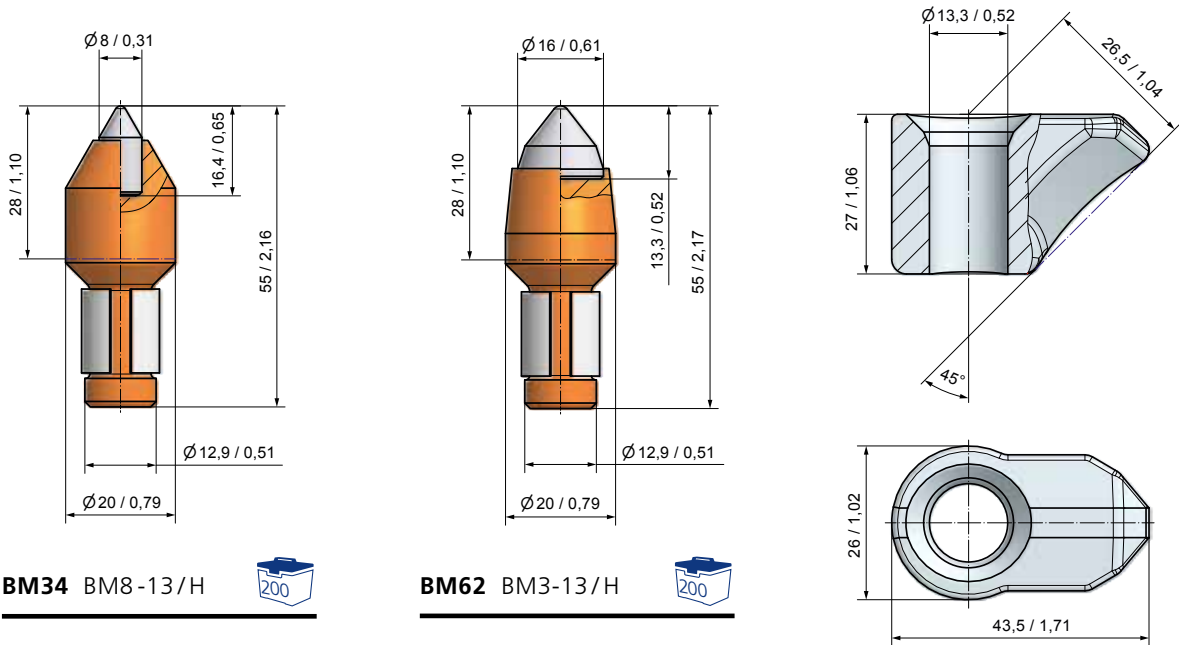
BM46 BM3-11.3



BHR03 B11



SCHAFTSYSTEM | SHANK SYSTEM | Ø 13 MM/0,51"



BM34 BM8-13/H



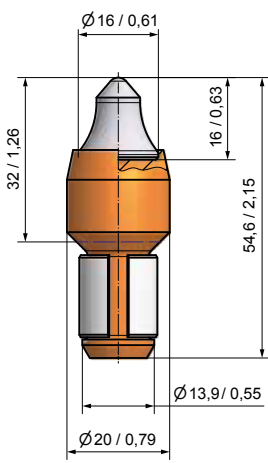
BM62 BM3-13/H



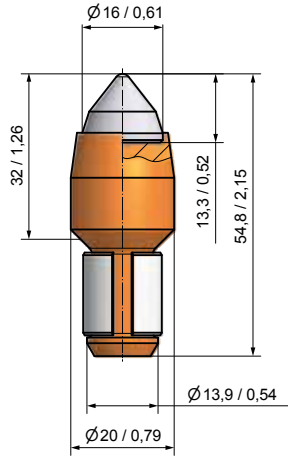
BHR47 B13



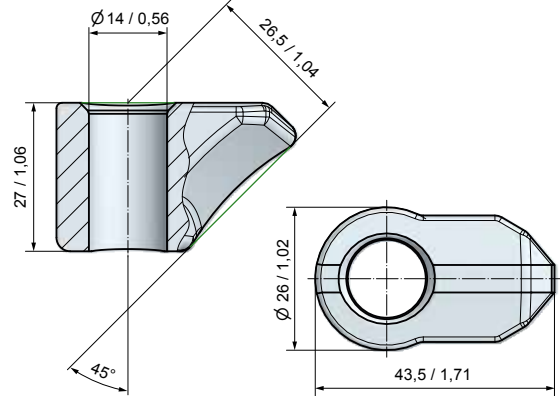
SCHAFTSYSTEM | SHANK SYSTEM | Ø 14 MM/0,55"



BM55 BM4-14/2



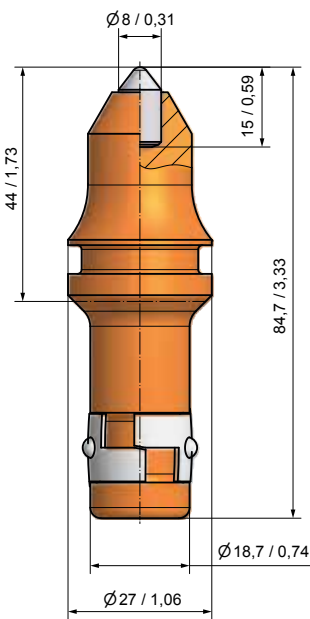
BM60 BM3-14/H



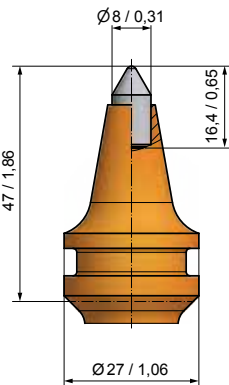
BHR109 B14



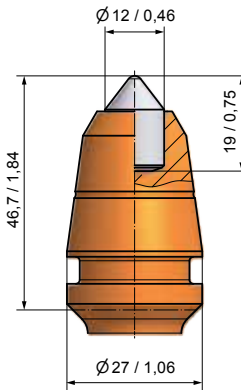
SCHAFTSYSTEM | SHANK SYSTEM | Ø 18,7 MM/0,74"



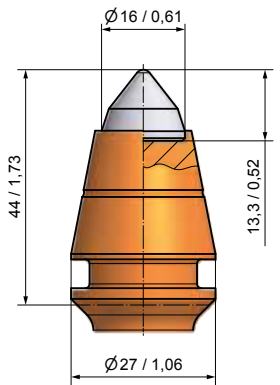
BTR01 B43K8



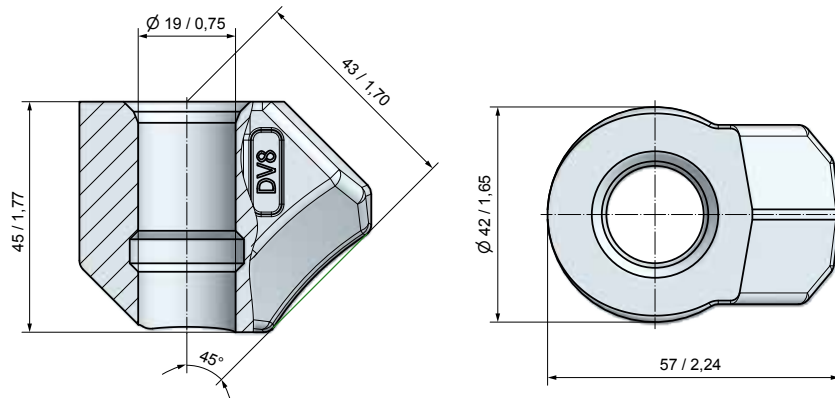
BTR08 B43K8S



BTR02 B43HDK12



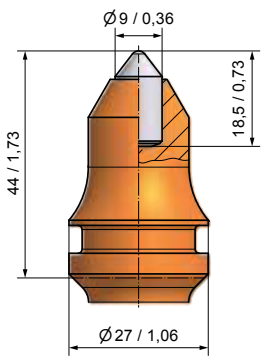
BTR03 B43/3



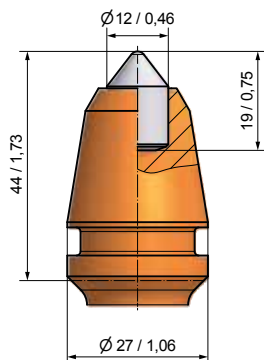
BHR20 DV8



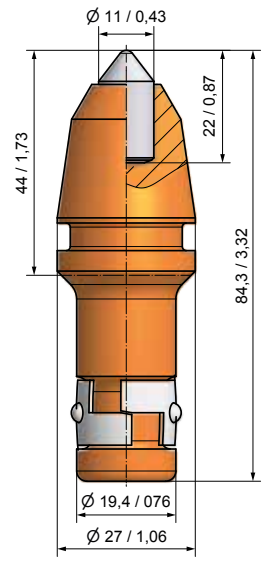
SCHAFTSYSTEM | SHANK SYSTEM | Ø 19,4 MM/0,76"



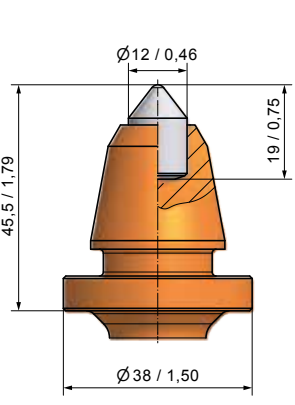
BSK15 B1K9-K



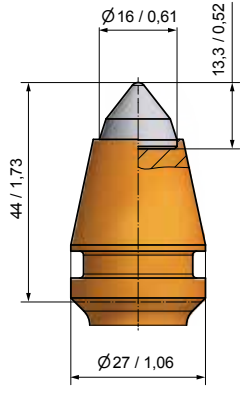
BSK17 B1HDK12-K



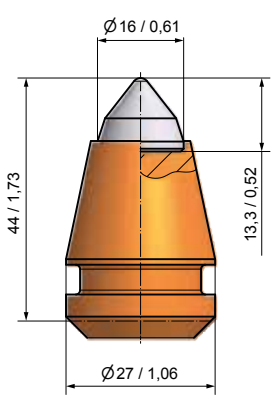
BSK16 B1HDK11-K



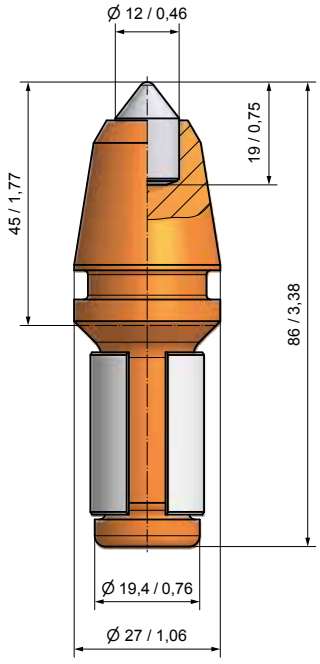
BSK21 B1-12/38-K



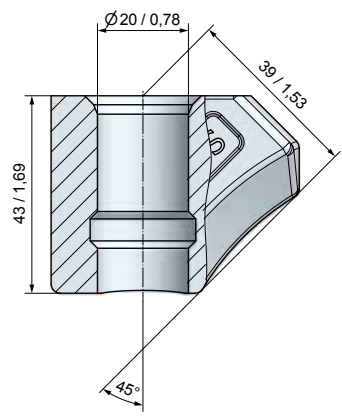
BSK23 B3-K/2



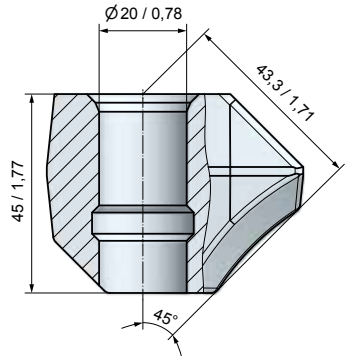
BSH09 B3



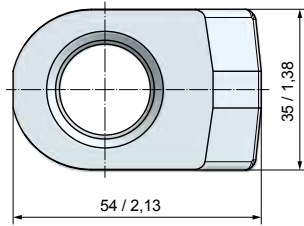
BSH05 B1HDK12



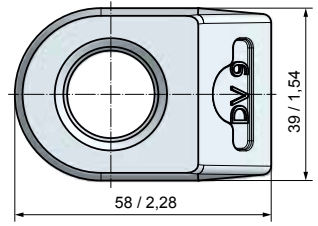
BHR164 DV9-S



BHR07 DV9



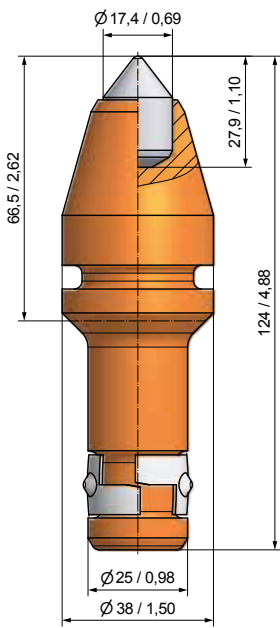
BHR164 DV9-S



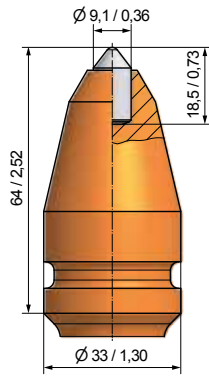
BHR07 DV9



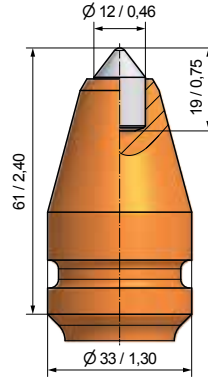
SCHAFTSYSTEM | SHANK SYSTEM | Ø 25 MM/1"



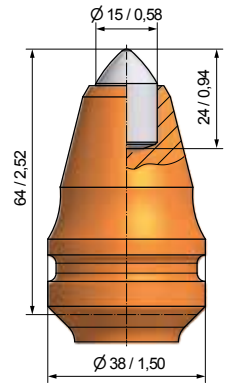
BTK70 B40K17.5



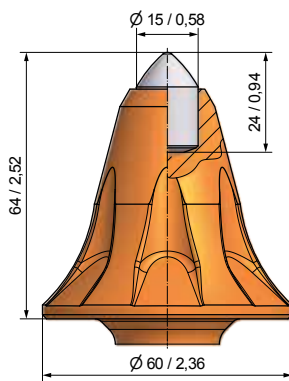
BTK01 B40K9



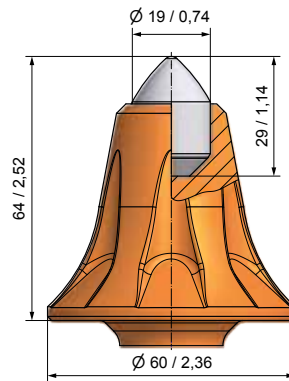
BTK03 B40HDK12



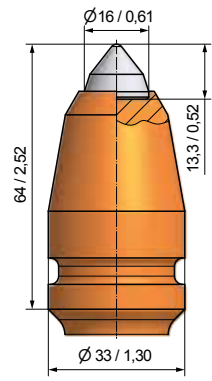
BTK10 B40HDS



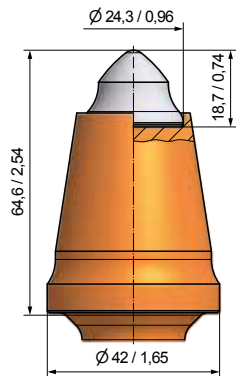
BTK81 B40HDS/60



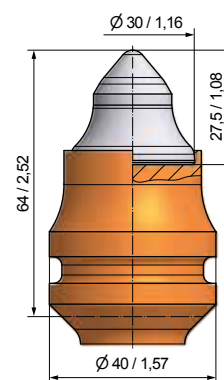
BTK89 BG25K-19.6064



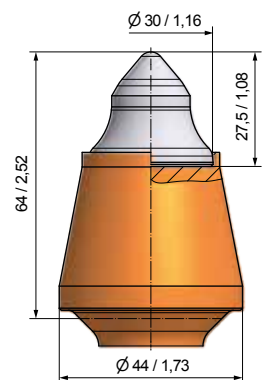
BTK16 B40/3



BTK87 B40/9



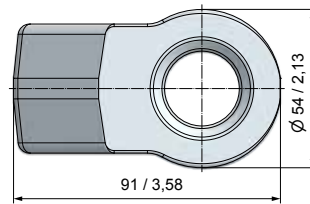
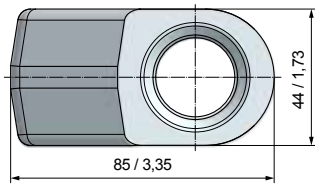
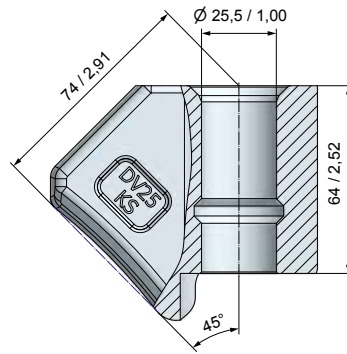
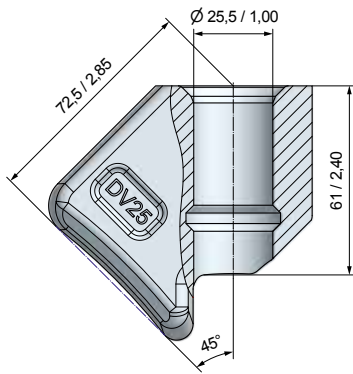
BTK23 B40HBL



BTK26 B40-J1-HBL



SCHAFTSYSTEM | SHANK SYSTEM | Ø 25 MM/1 "



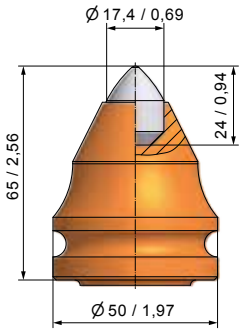
BHR31 DV25



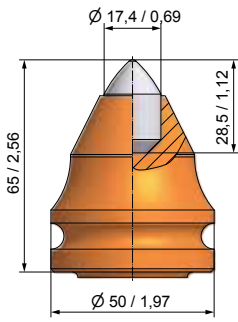
BHR121 DV25KS



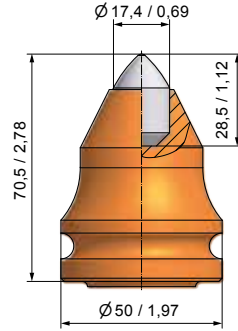
SCHAFTSYSTEM | SHANK SYSTEM | Ø 38/30 MM - 1,5/1,18"



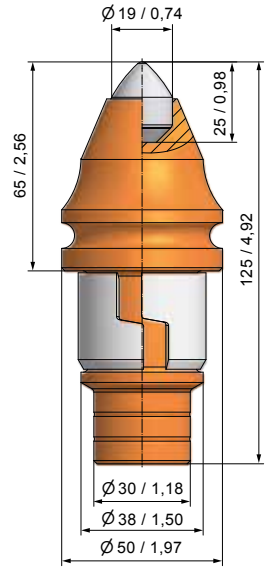
BKH140
B47K17.5-H/2



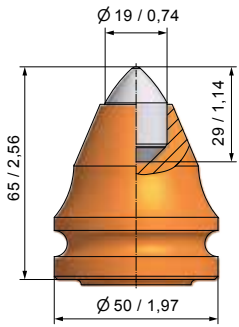
BKH28
B47K17.5-H



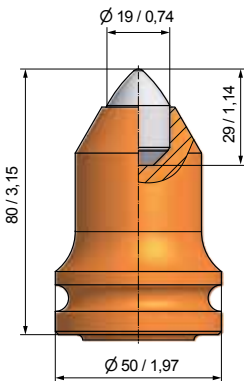
BKH80
B47K17.5LK70-H



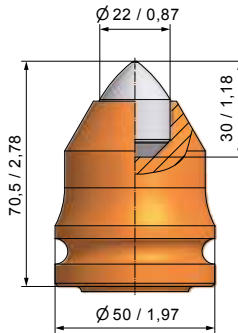
BKH83
B47K19-H/2



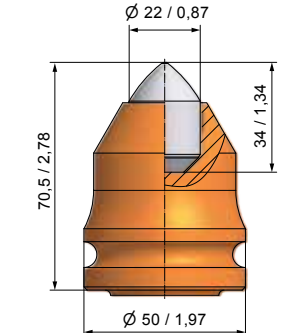
BKH40
BS38H-19.5065



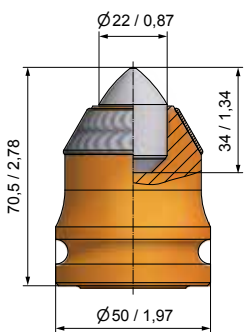
BKH41
B47K19LK80-H



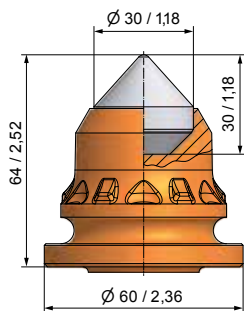
BKH85
B47K22-H/2



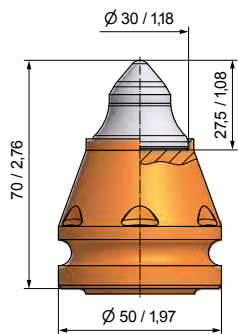
BKH47
B47K22-H



BKH47P
B47K22-HP



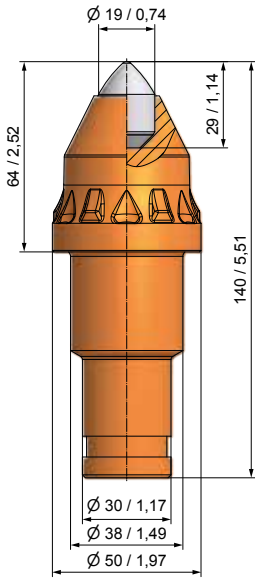
BKH92
BS38H-30.6064



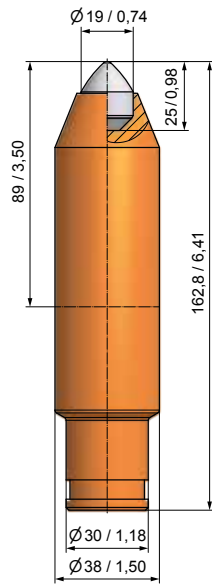
BKH101
BS38H-69.5070



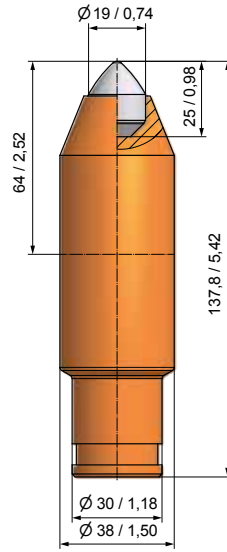
SCHAFTSYSTEM | SHANK SYSTEM | Ø 38/30 MM - 1,5/1,18"



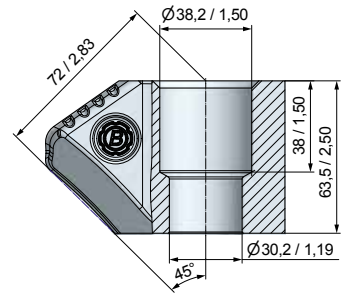
BKS154
BS38W-19.5064



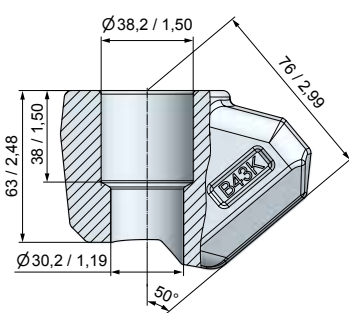
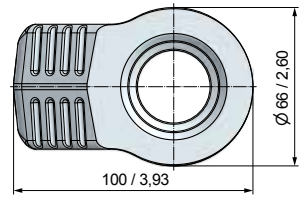
BKS186
BS38W-19.3889



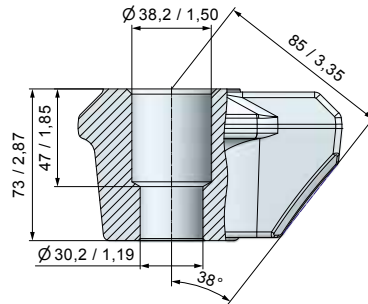
BKS187
BS38W-19.3864



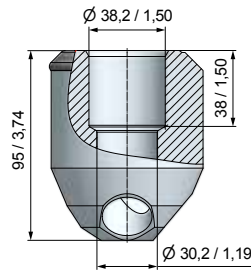
BHR38
B43H



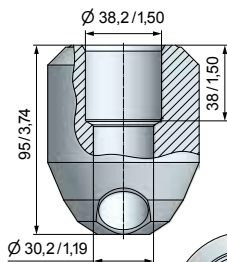
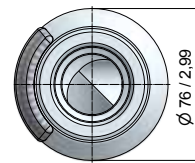
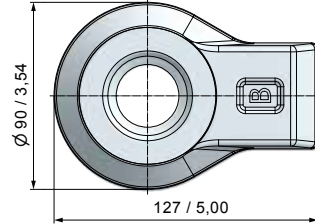
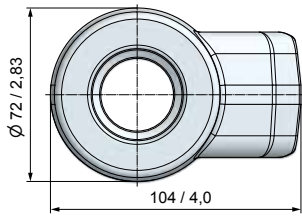
BHR113 B43K



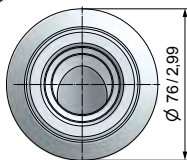
BHR77 B320



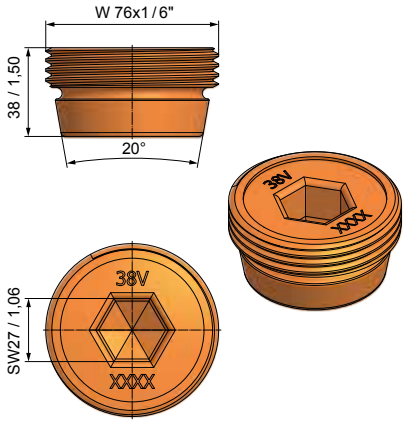
BHR163 B76/P



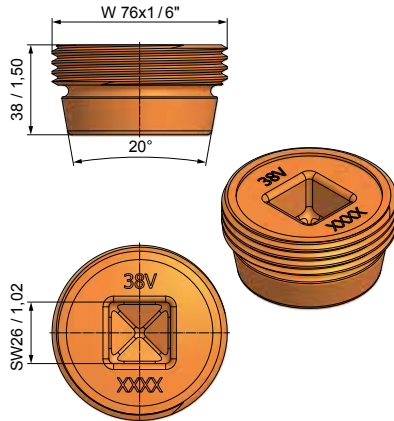
BHR216 B76



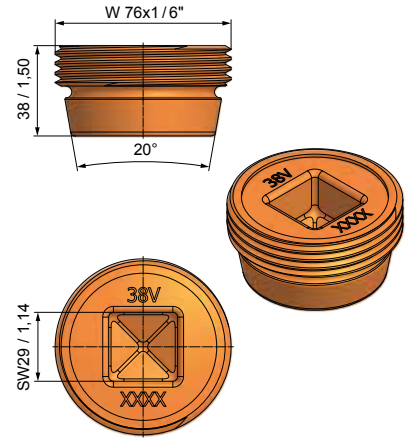
BOHRROHRVERSCHRAUBUNGEN | SCREW CONNECTIONS



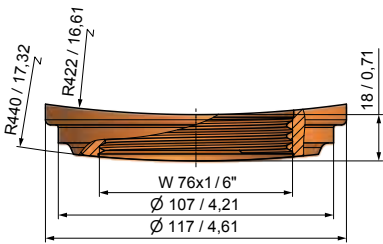
BRV08
BRV75/38LV



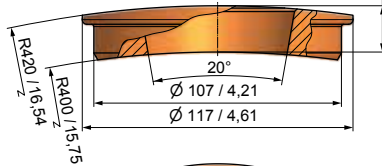
BRV10
BRV75/38LV/4



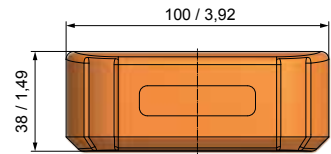
BRV23
BRV75/38LV/4/29



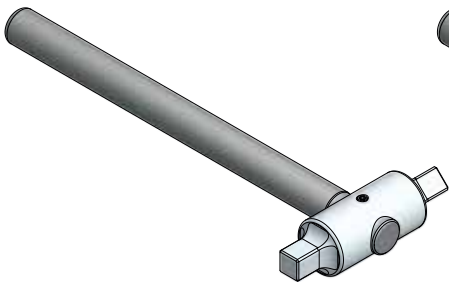
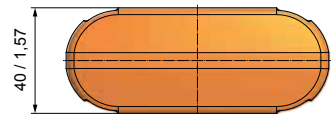
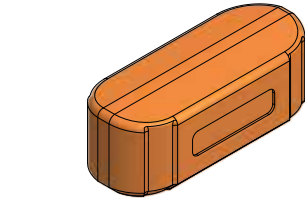
BRV02
BRV-G88/L



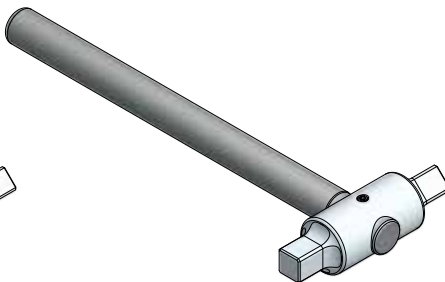
BRV03
BRV-K88/L



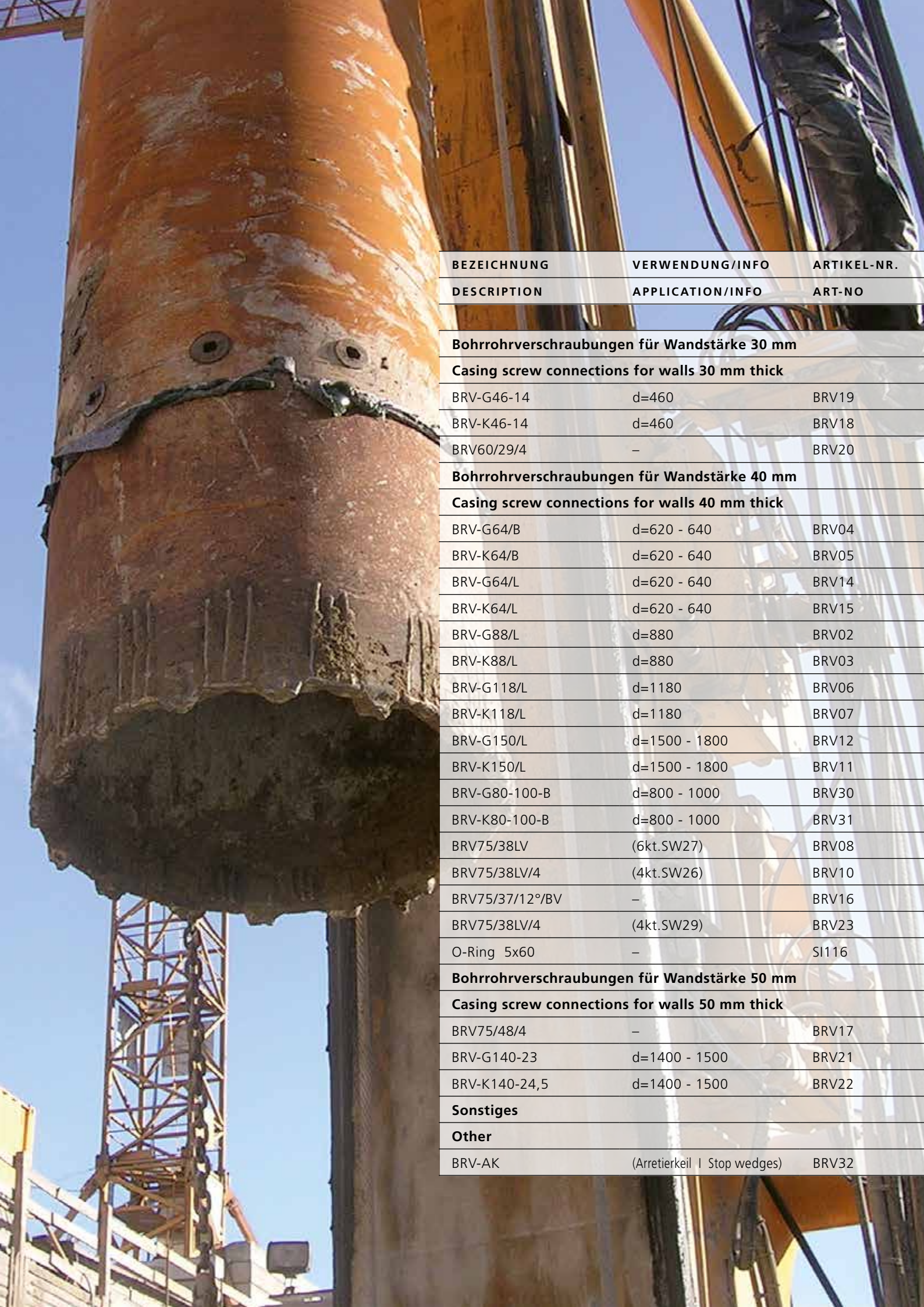
BRV32
BRV-AK



BRV34 BRVSW26



BRV35 BRVSW29



BEZEICHNUNG	VERWENDUNG/INFO	ARTIKEL-NR.
DESCRIPTION	APPLICATION/INFO	ART-NO

Bohrrohrverschraubungen für Wandstärke 30 mm

Casing screw connections for walls 30 mm thick

BRV-G46-14	d=460	BRV19
BRV-K46-14	d=460	BRV18
BRV60/29/4	–	BRV20

Bohrrohrverschraubungen für Wandstärke 40 mm

Casing screw connections for walls 40 mm thick

BRV-G64/B	d=620 - 640	BRV04
BRV-K64/B	d=620 - 640	BRV05
BRV-G64/L	d=620 - 640	BRV14
BRV-K64/L	d=620 - 640	BRV15
BRV-G88/L	d=880	BRV02
BRV-K88/L	d=880	BRV03
BRV-G118/L	d=1180	BRV06
BRV-K118/L	d=1180	BRV07
BRV-G150/L	d=1500 - 1800	BRV12
BRV-K150/L	d=1500 - 1800	BRV11
BRV-G80-100-B	d=800 - 1000	BRV30
BRV-K80-100-B	d=800 - 1000	BRV31
BRV75/38LV	(6kt.SW27)	BRV08
BRV75/38LV/4	(4kt.SW26)	BRV10
BRV75/37/12°/BV	–	BRV16
BRV75/38LV/4	(4kt.SW29)	BRV23
O-Ring 5x60	–	SI116

Bohrrohrverschraubungen für Wandstärke 50 mm

Casing screw connections for walls 50 mm thick

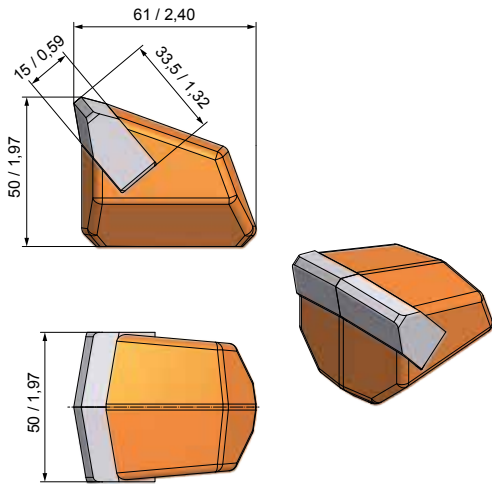
BRV75/48/4	–	BRV17
BRV-G140-23	d=1400 - 1500	BRV21
BRV-K140-24,5	d=1400 - 1500	BRV22

Sonstiges

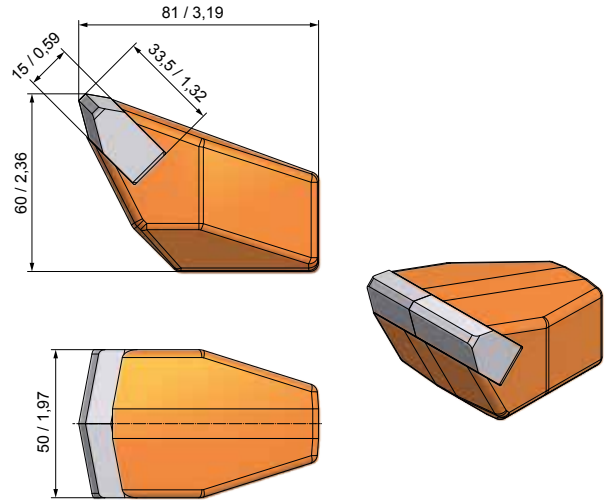
Other

BRV-AK	(Arretierkeil Stop wedges)	BRV32
--------	------------------------------	-------

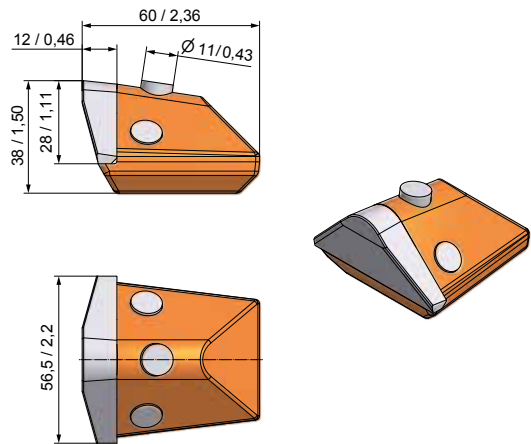
MICROTUNNELLING - SCHÄLMESSER | SCRAPER BLADES



BFZ51 BFZ51



BFM08 BFM112x50/S

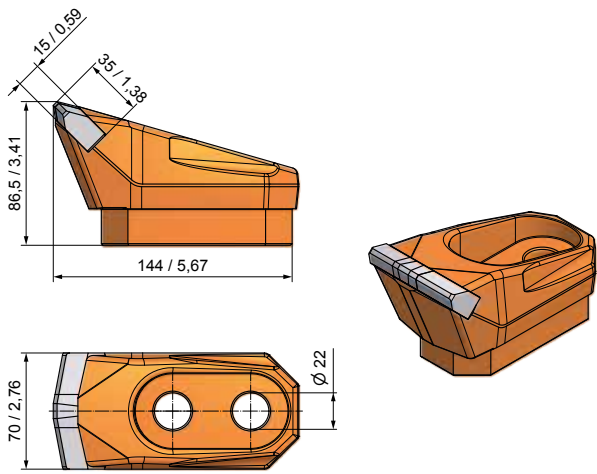


BFZ163 BFZ56

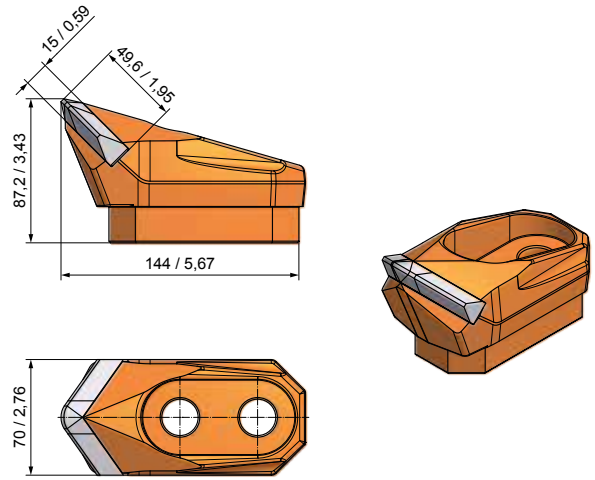




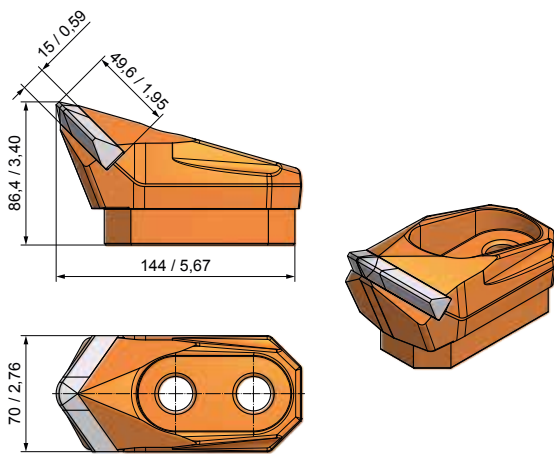
MICROTUNNELLING - SCHÄLMESSER | SCRAPER BLADES



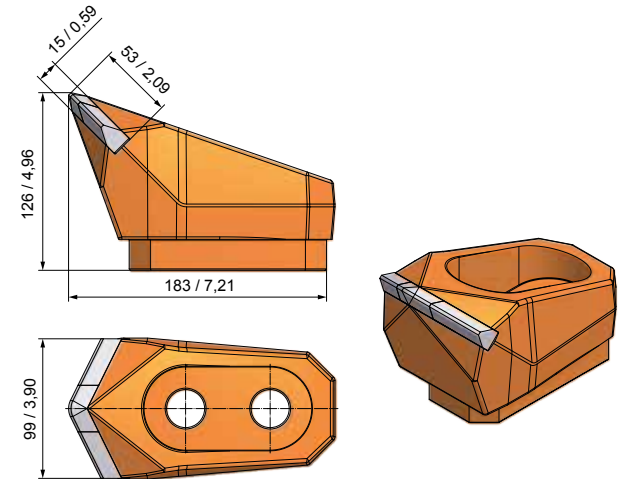
BFM07 BFM144x70



BFM16 BFM144x86x70



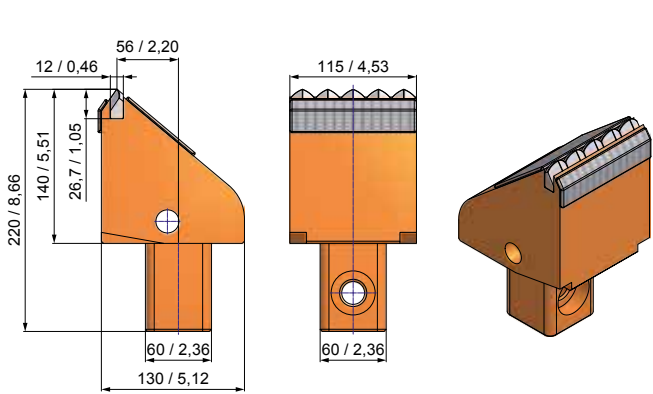
BFM70 BFM144x86x70/1



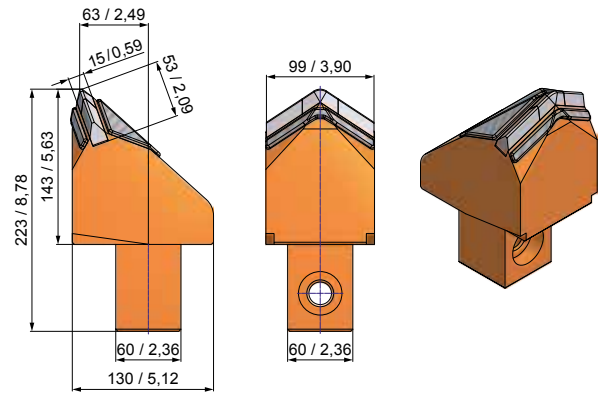
BFM71 BFM183x126x100



SCHÄLMESSER FÜR TBM | SCRAPER BLADES FOR TBM



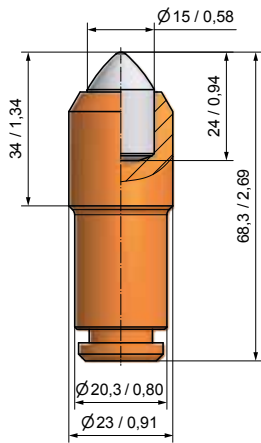
BFZ280 BFZ220x115



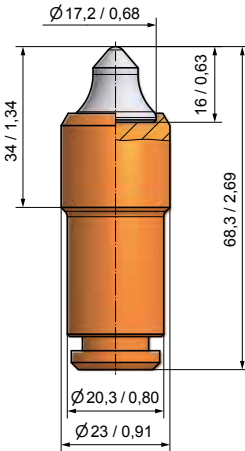
BFZ275 BFZ222,5x100



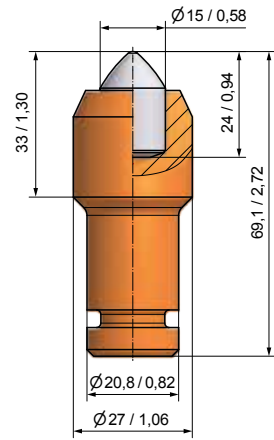
HDD WERKZEUGE | HDD TOOLS



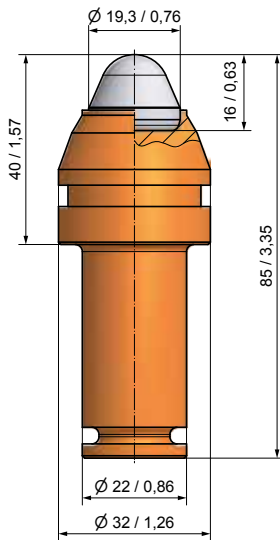
BSR187
BG20X-15.2334



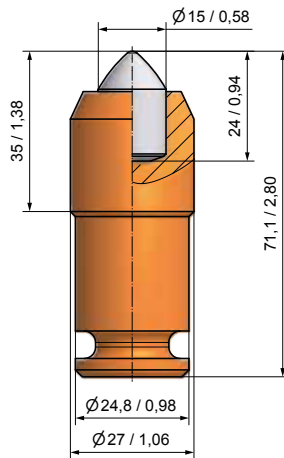
BSR186
BG20X-62.2334



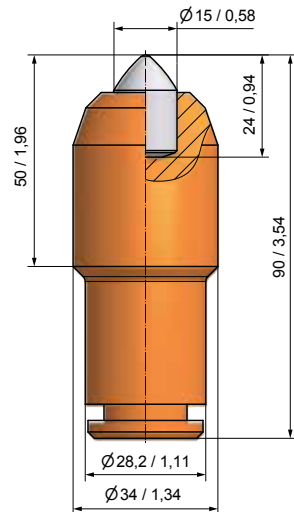
BSR93
BG21X-15.2733



BC80
BG22X-19.3240



BSR115
BG25X-15.2735



BSR110
BG28F-15.3450



ZUBEHÖR | ACCESSORIES



BZ44 Meißelaustreiber für Minimeißel
Bit extractor for Mini bit



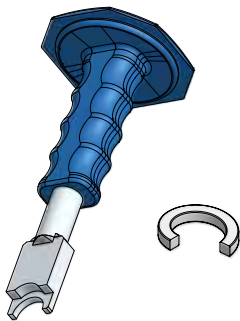
BZ42 Meißelaustreiber für BSH und BC-Serie
Bit extractor for BSH and BC-Series



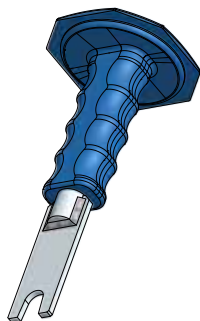
BZ43 Meißelaustreiber für BSH und BC-Serie
Bit extractor for BSH and BC-Series



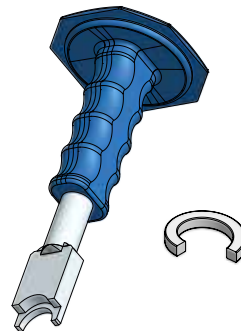
BZ38 Keilaustreiber für Schaftdurchmesser
Wedge puller for shaft diameter 20-25



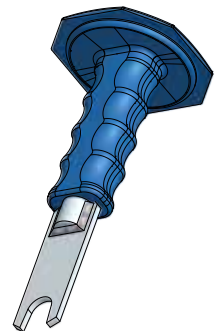
BZ33 Montagewerkzeug für SI36
Assembly tool for SI36



BZ31 Demontagewerkzeug für SI36
Disassembly tool for SI36



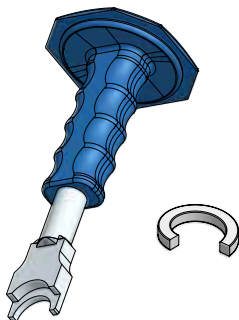
BZ41 Montagewerkzeug für SI26
Assembly tool for SI26



BZ32 Demontagewerkzeug für SI26
Disassembly tool for SI26



BZ22 Meißelauszieher für BTK-Serie
Bit puller for BTK-Series



BZ37 Montagewerkzeug für SI79/K
Assembly tool for SI79/K

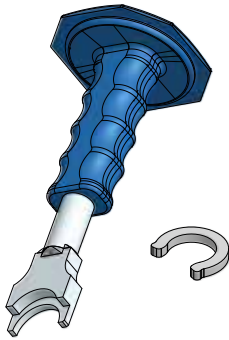


BZ36 Demontagewerkzeug für SI79/K
Disassembly tool for SI79/K

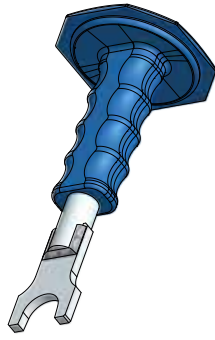


BZ05 Meißelauszieher für Kopfdurchmesser 60
Bit puller for Headdiameter 60

ZUBEHÖR | ACCESSORIES



BZ35 Montagewerkzeug für SI239
Assembly tool for SI239



BZ34 Demontagewerkzeug für SI239
Disassembly tool for SI239



BZ39 Keilastreiber für Schaftdurchmesser 30-38
Wedge puller for shaft diameter 30-38



SRZ02 Zange für SR83/1, SR61 und SR54
Plier for SR83/1, SR61 and SR54



BZ12 Meißelauzieher für BKH-Serie
Bit puller for BKH-Series



BZ18 Meißelauzieher mit Kupferscheibe für BKH-Serie
Bit puller with copper disk for BKH-Series



BZ16 Meißelastreiber für Spannstift mit Durchmesser 10
Bit extractor for Roll pin with diameter 10



BZ30 Meißelastreiber für Spannstift mit Durchmesser 16
Bit extractor for Roll pin with diameter 16



BZ40 Keilastreiber für Stufenschaft 43/35
Wedge puller for stepshank 43/35

TUNGSTUDS MIT HARTMETALLKERN | TUNGSTUDS WITH TUNGSTEN CARBIDE CORE

HOCHLEISTUNG IM ANGEBOT

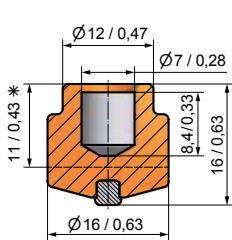
Zu den TungStuds liefern wir Ihnen auf Wunsch die entsprechenden Bolzenschweißanlagen. Bitte fragen Sie an, falls Sie andere Abmessungen wünschen. Gerne nennen wir Ihnen auch die typischen Einsatzgebiete für die hier abgebildeten TungStuds.



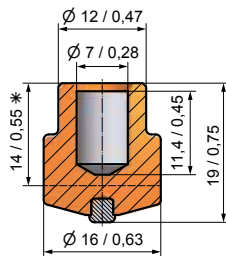
HIGH PERFORMANCE INCLUDED

On request, we can also provide you with the appropriate stud-welding machine for your TungStuds. Please ask us if you need any different sizes. We will also gladly explain to you the typical areas of use for the TungStuds shown here.

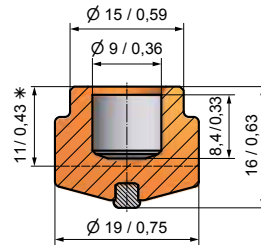
- * Höhe nach dem Anschweißen
- * Height subsequent after welding on



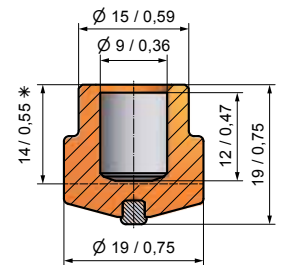
BTS01 BTSD16/16



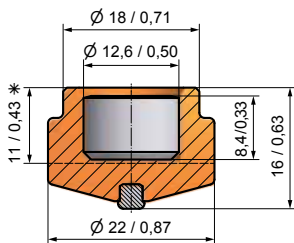
BTS02 BTSD16/19



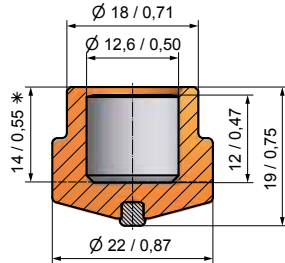
BTS03 BTSD19/16



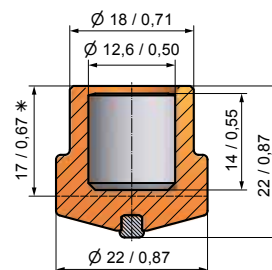
BTS04 BTSD19/19



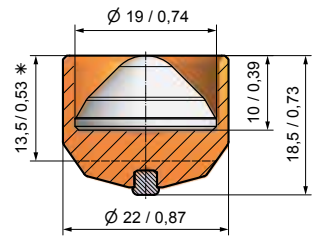
BTS05 BTSD22/16



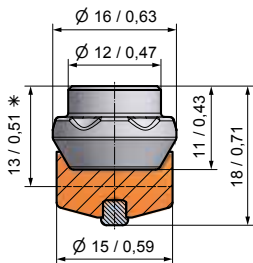
BTS06 BTSD22/19



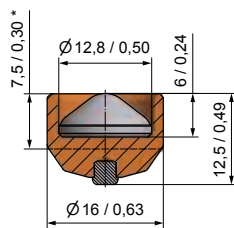
BTS07 BTSD22/22



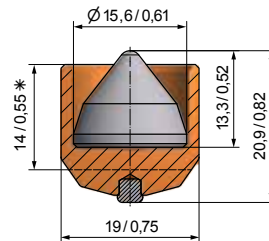
BTS08 BTSD22/18,5SG



BTS10B BTSD16/18B

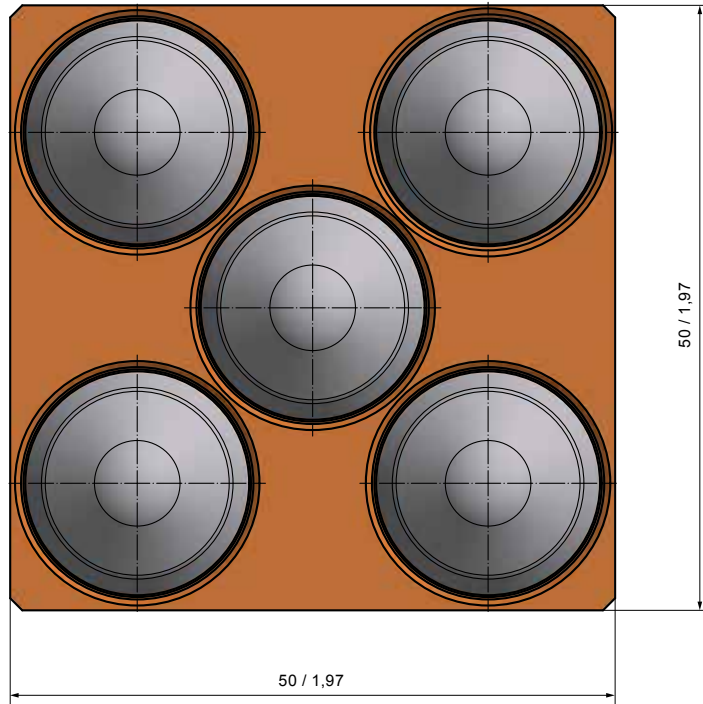
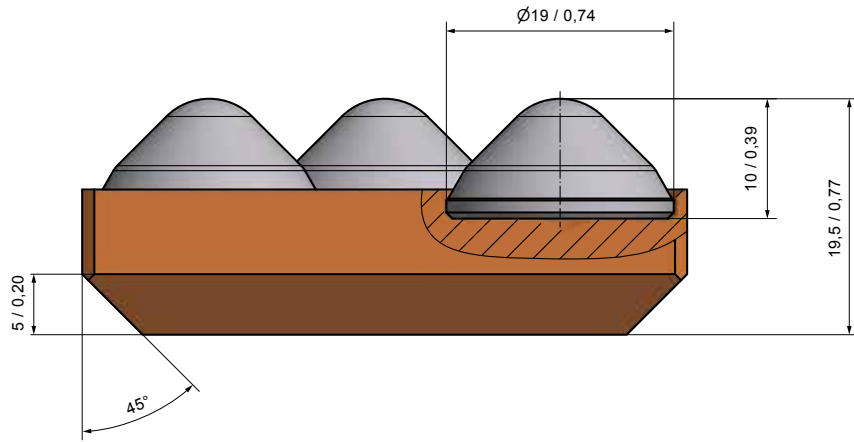


BTS20 BTSD16/12,5SG



BTS100 BTSD19/15,6SG

TUNGSTUDS BTS-PLATES



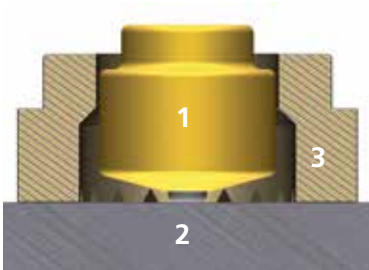
ABMESSUNGEN | DIMENSIONS

Breite Width in mm	Länge Length in mm
50	50
75	75
100	100
125	125
150	150

Weitere Abmessungen auf Anfrage | Other sizes on request

DER SCHWEISSPROZESS | THE WELDING PROCESS

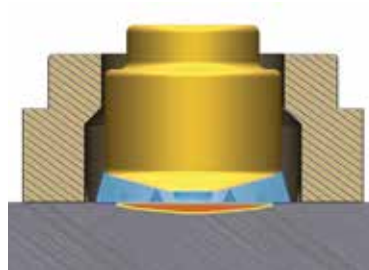
1



Der TungStud (1) wird auf die zu schützende Metallfläche (2) aufgesetzt. Zum Schutz des Schweißbades ist er von einem Keramikring (3) umschlossen.

The TungStud (1) is placed onto the metal surface (2) that is to be protected. To protect the weld pool a ceramic ferrule (3) is placed around it.

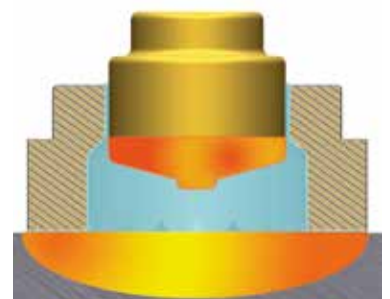
2



Unter Stromfluss hebt sich der TungStud ab und es entsteht ein Lichtbogen.

When an electric current is applied, the TungStud raises up and an arc is initiated.

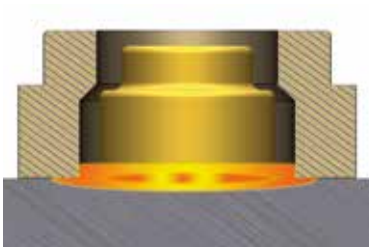
3



Durch den Lichtbogen werden TungStud und Metallfläche angeschmolzen.

The arc causes TungStud and metal surface to become partly fused.

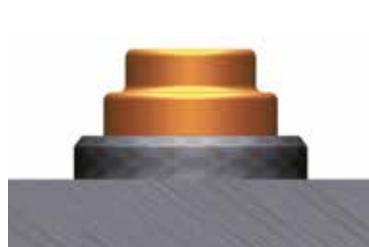
4



Der TungStud taucht in die Schmelze ein.

The TungStud sinks into the fused mass.

5



Es entsteht eine vollflächige Verbindung.

The two become completely joined

Beim Aufschweißen der TungStuds ist grundsätzlich eine geeignete Schutzausrüstung zu tragen!

Whenever you are welding on TungStuds, suitable protective equipment must always be worn!

WEITERKOMMEN! – MIT INTELLIGENTEN LÖSUNGEN

- Schnelles Aufschweißen der TungStuds
- Auch auf unregelmäßigen Oberflächen einsetzbar
- Nach Verschleiß die TungStuds einfach erneuern
- Es können auch einzelne TungStuds ausgewechselt werden
- Verschleißarm durch Hartmetallkern
- Höhere Produktivität durch weniger Wartungsaufwand
- Kostenreduzierung durch weniger Stillstandzeiten
- Minimaler Ersatzteilaufwand

PROGRESS! – WITH INTELLIGENT SOLUTIONS

- TungStuds are quickly welded on
- Can also be used on uneven surfaces
- When TungStuds are worn, simply replace them
- Individual TungStuds can also be replaced
- Resistant to wear thanks to tungsten carbide core
- Less maintenance work means higher productivity
- Cost reduction through less downtime
- Minimal spare parts expenditure

TUNGSTUDS PERFORMANCE

CUTTING WEAR PROTECTION

- The TungStuds are welded on in a grid pattern
- The space between the TungStuds does not have to be embedded with mineral debris (cutting wear protection)

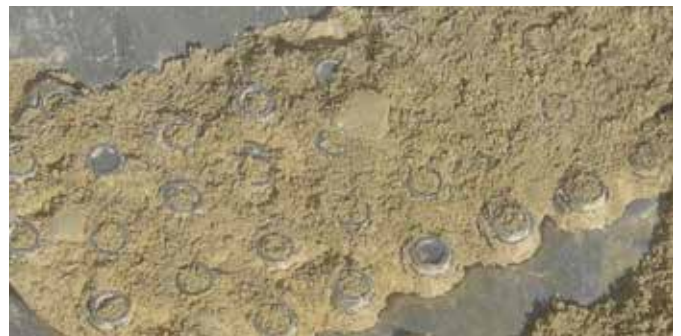
EXTENSIVE WEAR PROTECTION



ROCK BOX EFFECT

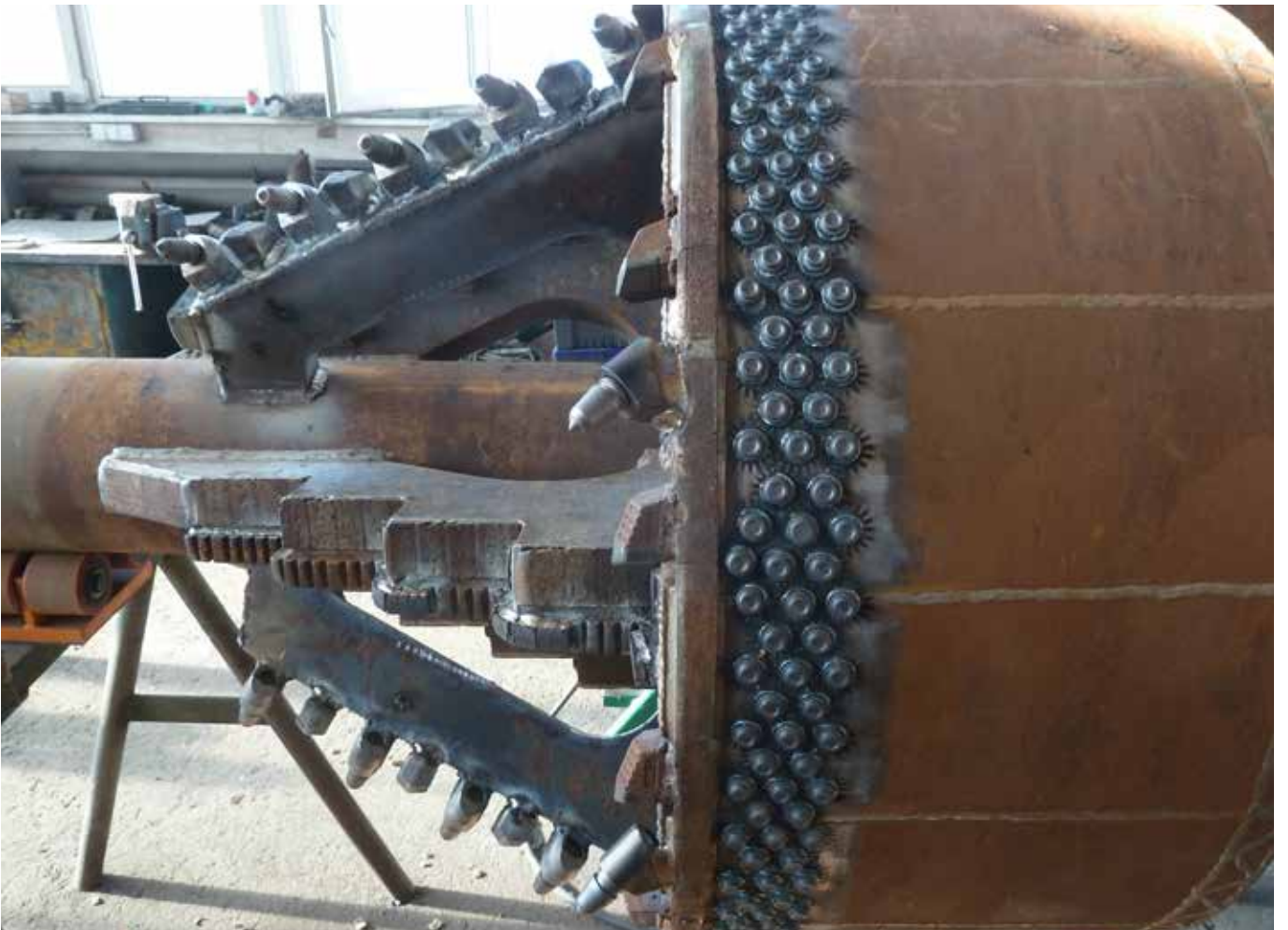
- The TungStuds are welded on in a grid pattern
- The space between the TungStuds become embedded with mineral debris (Rock-Box-Effect)

EXTENSIVE WEAR PROTECTION

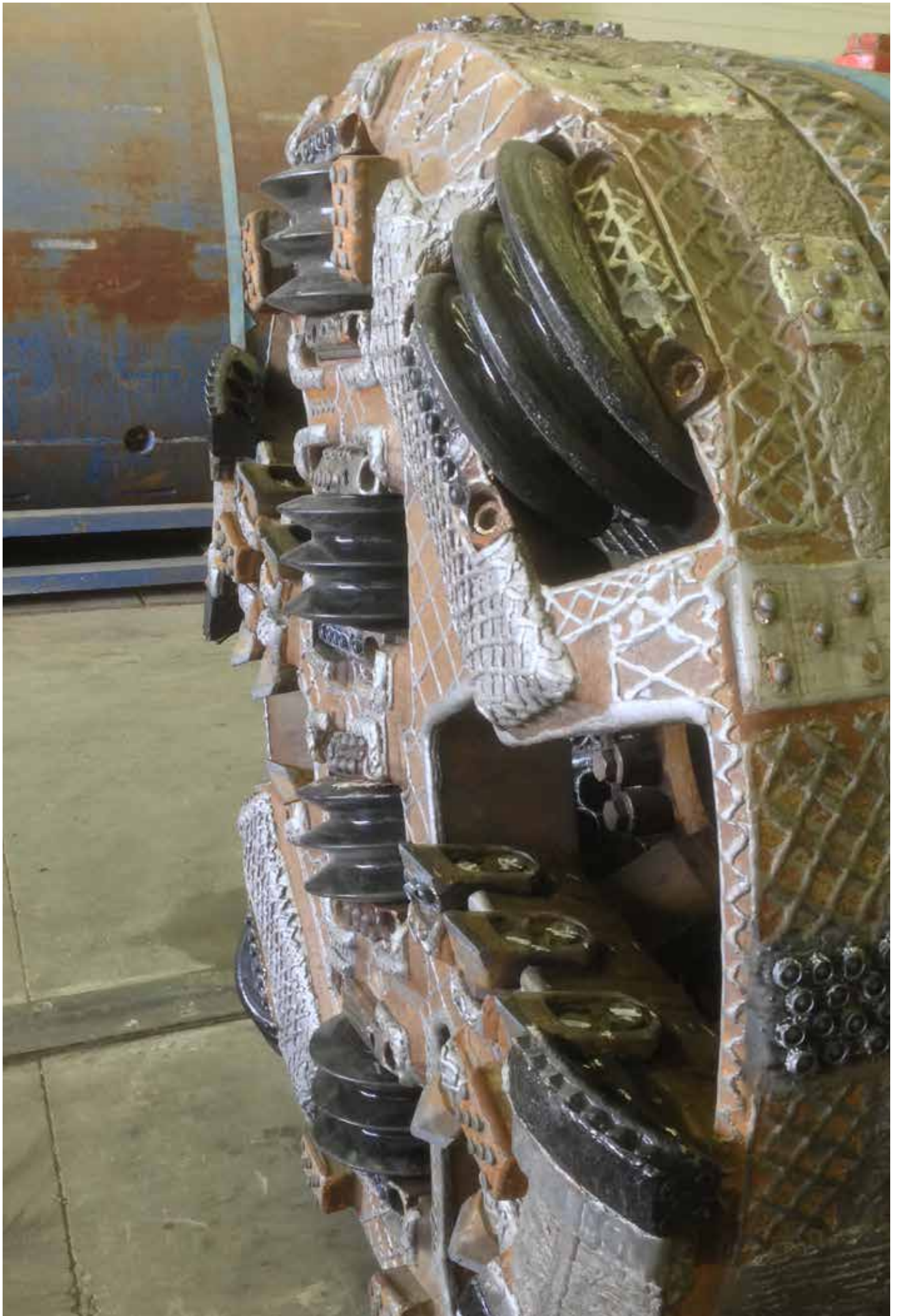


















BETEK GmbH & Co. KG

Sulgener Str. 21-23
D-78733 Aichhalden

Service-Nummer +49 (0) 7422. 565-591
Service-Fax +49 (0) 7422. 565-122

info@betek.de
www.betek.de

VERTRIEBSPARTNER