



FURUKAWA ROCK DRILL USA  
*Rock Drill Division*

# HCR90-ESV



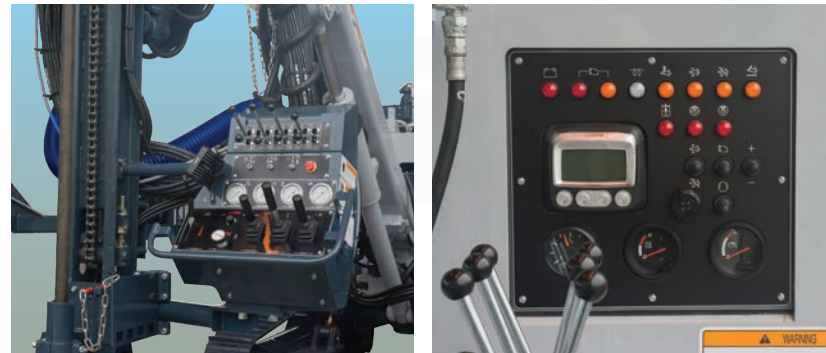
HCR900-ESV Equipped with Cummins® Tier-IV EPA Compliant Engine.

# Innovative Features for Higher Performance

**HCR900-ESV**

## Combining Performance and Economy.

Combining performance and economy, the HCR900-ESV is the perfect drill for quarries or construction sites. Simple, durable and efficient, the HCR900-ESV with extendable boom incorporates a self-adjusting drill system that ensures high productivity no matter what the drilling situation. By automatically controlling the impact force, feed force, rotation force and dual damper pressure, the HCR900-ESV continuously adapts to the changing rock conditions, increasing drilling performance and the life of drill tools while decreasing fuel consumption.



Reliable dust control system.

## Drill Straighter with the HD818 Drifter.

The Furukawa HD818 drifter (patent applied for) is designed to minimize drill noise and vibration, while increasing percussion frequency by 24% versus the HD709 drifter, its predecessor.

Dual dampening system stabilizes the bit against the rock, ensuring efficient energy transfer and straighter holes. The system automatically adjusts the drifter for maximum performance regardless of the rock condition.

## Maximize operator performance with the ultimate in drilling technology.

Ergonomically designed to minimize operator fatigue. The engine, compressor and hydraulic oil temperature gauges are highly visible, allowing the operator to monitor machine functions while remaining focused on the drilling.

## High output compressor & dust collector.

The dust collector is equipped with an effective pre-cleaner that has the same suction capacity as previous models and reduces drilling dust leakage. An optional water/dust suppression system is available for difficult drilling conditions.



## Added features bring versatility.

- Low emission, Tier-IV Cummins® engine meets strict North American exhaust emissions regulations.
- Rod Rack allows to store four drill steels plus one starter rod.
- Winch-ready frame adds application versatility.



- Also increases:
  - Impact rates up to 3,400 blows per minute.
  - Free air delivery up to 215 cfm (6.1 m³/min).
  - Traction up to 16,636 lb-force (74.0 kN).
  - Shoe width up to 12" (300 mm).
  - Dust collector capacity up to 706 cfm (20 m³/min.).
  - Suction hose size up to 4" (100 mm).

## Right access cover

- Easy access to filters and battery.

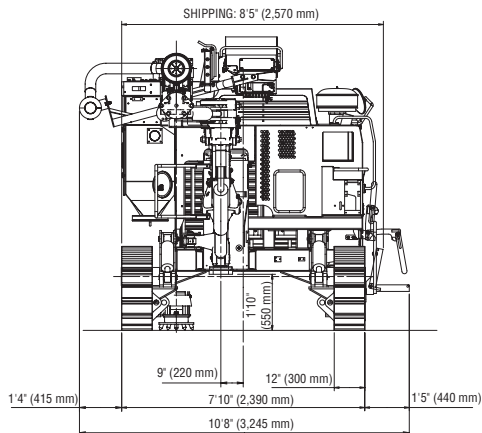
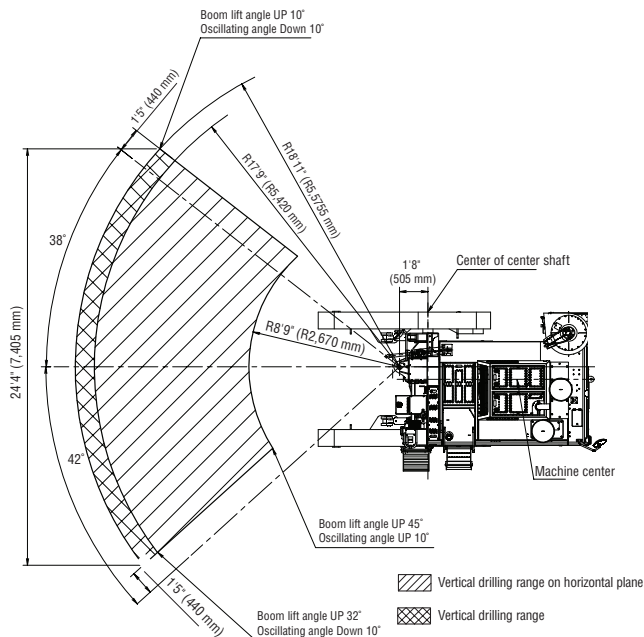
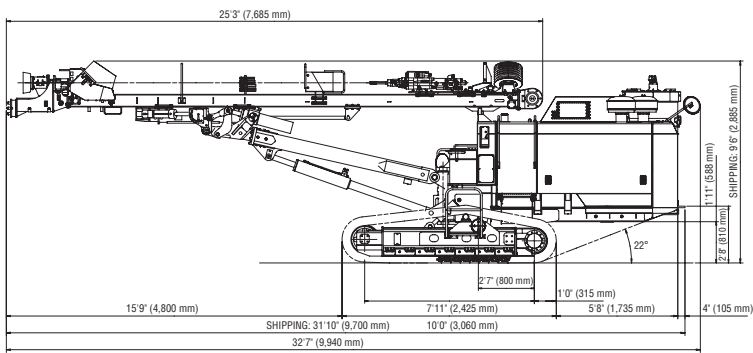
## Rear panel

- Cooling systems located in the rear, providing quieter work environment for the operator.

## Left access cover

- Easy access to fluid level, gauges and engine maintenance points.





Note:  
 \*1 "Overall Weight (A)" includes weights of fuel and oils (full).  
 \*2 "Overall Weight (B)" includes weight of "Overall Weight (A)", operator, rod and bit.  
 \*3 "Ground Contact Pressure" is calculated based on "Overall Weight (A)".

Cummins is a registered trademark of Cummins, Inc.  
 AIRMAN is a registered trademark of HOKUETSU INDUSTRIES CO., LTD.

Furukawa's policy is one of continual improvement. Specifications may change between printing.



**FURUKAWA ROCK DRILL USA**

**Rock Drill Division**

805 Lake Street

Kent, Ohio 44240-0017

Phone: 800.358.4476

Fax: 330.673.8504

[www.furukawarockdrill.com](http://www.furukawarockdrill.com)



	HCR900	ESV	
		US Standard	Metric
<b>Dimensions and Weight</b>	Overall Weight (A) *1	24,317 lb	11,030 kg
	Overall Weight (B) *2	24,978 lb	11,330 kg
	Overall Length	32'7"	9,940 mm
	Shipping Length	31'10"	9,700 mm
	Overall Width	10'8"	3,245 mm
	Shipping Width	8'5"	2,570 mm
	Overall Height	9'6"	2,885 mm
Shipping Height	9'6"	2,885 mm	
<b>Drifter</b>	Model	HD818	
	Weight	445 lb	202 kg
	Length	3'7"	1,100 mm
	Width	1'2"	352 mm
	Height	0'11"	275 mm
	Number of Blows	2,800 - 3,400 bpm	
	Rotating Speed	0 - 200 rpm	0 - 200 min <sup>-1</sup>
<b>Undercarriage</b>	Track Length	10'0"	3,060 mm
	Track Length on Ground	7'11"	2,425 mm
	Track Width	0'12"	300 mm
	Ground Contact Pressure *3	10.8 psi	74.3 kPa
	Ground Clearance	1'10"	550 mm
	Frame Oscillation Angle	±10°	
	Tramming Speed	0 - 2.2 mph	0 - 3.5 km/h
	Gradeability	57.7% (30°)	
	Maximum Traction Force	16,636 lb-force	74 kN
	DEF Capacity	5.0 gal	19 L
<b>Engine</b>	Make & Model	Cummins® QS86.7 (Tier4 Final, Stage IV)	
	Type	Diesel, Water-Cooled, 6 Cylinders	
	Piston Displacement	408.9 cu in	6.7 L
	Power Output	225.3 hp / 2,200 rpm	168 kW / 2,200 min <sup>-1</sup>
<b>Hydraulic Equipment</b>	Fuel Capacity	84.5 gal	320 L
	Variable Displacement Pump	PV Pump x2	
<b>Boom</b>	Fixed Displacement Pump	Gear Pump x3	
	Drive Motor	Hydraulic Motor with Reduction Gear	
	Hydraulic Oil Reservoir Capacity	44.9 gal	170 L
<b>Guide Shell</b>	Model	JF326	
	Type	Extension	
	Boom Lift Angle (Up / Down)	45° / 15°	
	Boom Swing Angle (Right / Left)	37° / 43°	
<b>Compressor</b>	Boom Slide Length	4'11"	1,500 mm
	Model	GH831	
	Overall Length	25'3"	7,685 mm
	Feed Length	14'8"	4,480 mm
	Feed Type	Hydraulic Motor Driven Chain	
	Guide Slide Length	3'11"	1,200 mm
	Guide Swing Angle (Right / Left)	40° / 40°	
<b>Dust Collector</b>	Guide Tilt Angle	180°	
	Maximum Pulling Force	6,407 lb-force	28.5 kN
	Make & Model	AIRMAN PDS265-S37B	
	Type	1-Stage Screw Compressor	
<b>Rod Arrangement</b>	Discharge Airflow	215 cfm	6.1 m <sup>3</sup> /min
	Discharge Pressure	149 psi	1.03 MPa
	Model	A884-221	
	Suction Capacity	706 cfm	20 m <sup>3</sup> /min
<b>Bit and Rod</b>	Number of Filter Elements	4	
	Dust Removal System	Automatic Air Pulse Jet	
	Suction Cap	Slide Type	
	Model	-	
<b>Electrics</b>	Type	Rack	
	Number of Rods	4 + 1 (Starter Rod)	
	Rod Diameter	1.3", 1.5", 1.8"	32 mm, 38 mm, 45 mm
	Number of Control Levers	-	
<b>Operating Environment</b>	Bit Range	2.5" - 3.5"	64 mm - 89 mm
	Rod Diameter	32H, 38R, 45R, (38H)	
	Rod Length	10' or 12'	3,050 mm or 3,660 mm
	Starter Rod Length	14'	4,270 mm
<b>Operating Environment</b>	Battery	12V; 108Ah/5hr	
	Light	24V; 70W x4	
<b>Operating Environment</b>	Voltage	DC 24V	
	Working Temperature	5° - 113° F	-15° - 45° C
<b>Operating Environment</b>	Maximum Altitude	9,843'	3,000 m